



### PASSENGER ARMRESTS FOR '14-UP TOURING

8953

#### Thank You For Choosing Kuryakyn!

Protect yourself and others from potential injury and property damage or loss. Pay close attention to all instructions, warnings, cautions, and notices regarding the installation, use, and care of this product.

#### **WARNING**

THIS INDICATION ALERTS YOU TO THE FACT THAT IGNORING THE CONTENTS DESCRIBED HEREIN CAN RESULT IN POTENTIAL DEATH OR SERIOUS INJURY.

#### **CAUTION**

This indication alerts you to the fact that ignoring the contents described herein can result in minor or moderate potential injury.

#### **NOTICE**

This indication alerts you to the fact that ignoring the contents described herein may negatively affect product performance and functionality or damage the product itself or the product to which it is being attached.

#### ENSURE THAT THE FOLLOWING PARTS HAVE BEEN INCLUDED IN THE KIT:

- 1 Right-Side Mount
- 1 Left-Side Mount
- 1 Right-Side Armrest Pad
- 1 Left-Side Armrest Pad
- 1 Hardware Kit containing:
  - 2 Paint Protectors
- 1 Installation Instructions

#### YOU WILL ALSO NEED:

Set of sockets and ratchet, warm, soapy water and a clean rag, set of hex wrenches

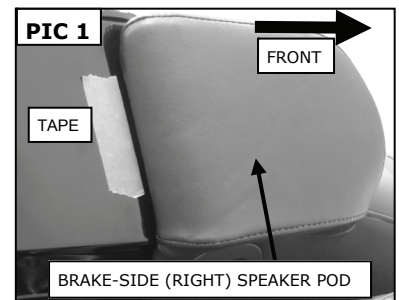
#### **NOTICE**

These installation instructions contain important information. Ensure that the end user receives this copy and is aware of its importance for future use.

- STEP 1** Read and understand all steps in the instructions before starting the installation. Park the motorcycle on a hard, level surface and turn **IGN OFF**. Allow the engine and exhaust system to cool. Remove the main fuse.

#### INSTALL THE ARMREST MOUNTS:

- STEP 2** Use masking tape to mark the Tour Pak® at the rearward edge of the right-side speaker pod as shown in **PIC 1**. Repeat for the left side.



#### **WARNING**

THE END USER'S SAFETY DEPENDS UPON PROPER INSTALLATION OF THIS PRODUCT. IF A STEP IN THESE INSTRUCTIONS IS NOT WITHIN YOUR CAPABILITIES OR YOU DO NOT HAVE THE CORRECT TOOLS, HAVE YOUR DEALER PERFORM THE PROCEDURE. IMPROPER INSTALLATION OF THIS PRODUCT COULD RESULT IN DEATH OR SERIOUS INJURY.

ACCIDENTAL VEHICLE START-UP COULD CAUSE DEATH OR SERIOUS INJURY, REMOVE THE MAIN FUSE BEFORE PROCEEDING.

**STEP 3** Open the Tour Pak™ lid.

**STEP 4** On the front of the Tour Pak™, locate and remove the two Torx screws shown in **PIC 2**. Removing the screws will release the tether anchor.

### NOTICE

With the screws removed, the tether anchor can retract rapidly causing damage to the motorcycle. Secure the tether anchor while the screws are being removed.

**NOTE:** Get someone to help secure the Tour Pak™ lid until the tether anchor is reattached to prevent the lid from opening too far.

**STEP 5** Remove the Tour Pak™ liner; pull upward on the rear of the liner to remove it.

**STEP 6** With the lid open, reattach the tether anchor. Do not over tighten the screws.

**STEP 7** Remove the two lower hex head screws and washers shown in **PIC 3**; set them aside for now, they will be reused. Let the power outlet (if equipped) hang for now.

### NOTICE

Avoid damage to the motorcycle. Protect painted surfaces with a soft cloth or blanket.

**STEP 8** Cover the right-side saddlebag lid with a soft cloth or service cover. Refer to **PIC 3**. Inside the Tour Pak™, loosen, but do not remove, the top hex head screw until the speaker pod can be removed. Set the speaker pod on the soft cloth or service cover. Ensure the bass port and gasket remain in place.

Repeat **STEPS 7 and 8** for the other side.

**STEP 9** Using warm, soapy water and a clean rag, remove all dirt, polish, and other debris from the area shown in **PIC 4**. Rinse and allow the area to dry completely.

**STEP 10** Remove and discard the backing from the included Paint Protectors.

**STEP 11** Refer to **PIC 4**. Using the masking tape mark from **STEP 2** as a guide, apply the Paint Protector to the Tour Pak™ just forward of the masking tape; smooth out any air bubbles with your finger. Remove and discard the masking tape.

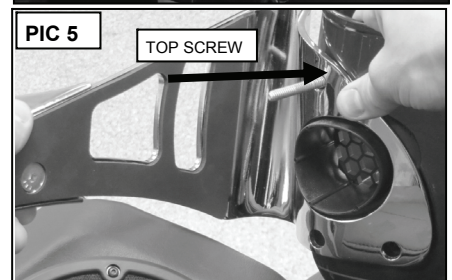
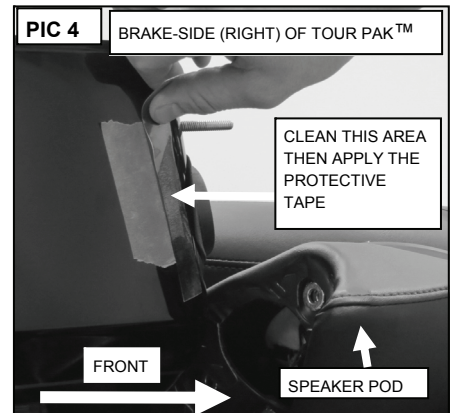
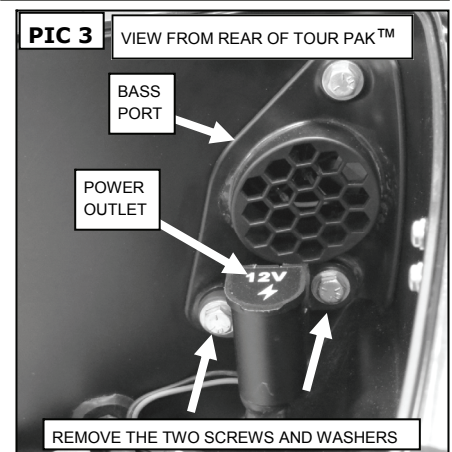
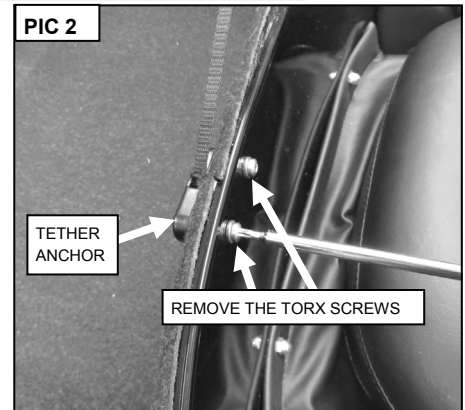
Repeat for the other side.

**STEP 12** Refer to **PIC 5**. Ensure the bass port flange is fully seated in the hole, then position the included Right-Side Mount over the top screw; align the speaker pod with the bass port flange and attach it with the top screw. Leave the screw finger tight for now.

**STEP 13** Inside the Tour Pak™, align the power outlet with the lower holes. Insert the two lower screws and thread them into the speaker pod; **torque the three hex head screws to 20-25 in-lbs (2.3-2.8 Nm)**.

Repeat **STEP 12 AND 13** for the other side.

**STEP 14** Get someone to help secure the lid; remove the tether anchor, reinstall the liner, then reinstall the tether anchor; **torque the two Torx screws to 25-35 in-lbs (2.8-3.9 Nm)**. Close the lid.



### ASSEMBLE THE ARMREST PADS:

**STEP 15** Insert the Right-Side Pad stud into the Right-Side Mount as shown in **PIC 5**.

Refer to **PIC 6**. Press the adjustment button inward as shown.

Adjust to the High, Mid, or Low position and release the button;

pull up and push down until the detent "clicks" into place.

The range of adjustment is approximately 1" (2.54 Cm).

Refer to **PIC 7**. Swing the drink holder out to use; rotate it back to stow.

**DO NOT ADJUST THE ARMREST HEIGHT WHILE RIDING OR WITH A DRINK IN THE HOLDER!**

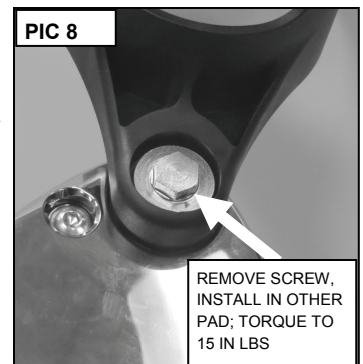
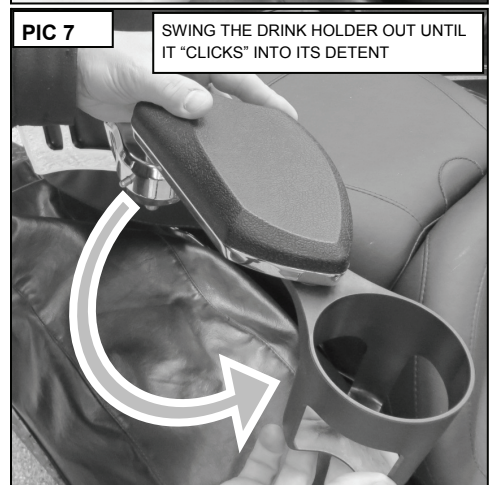
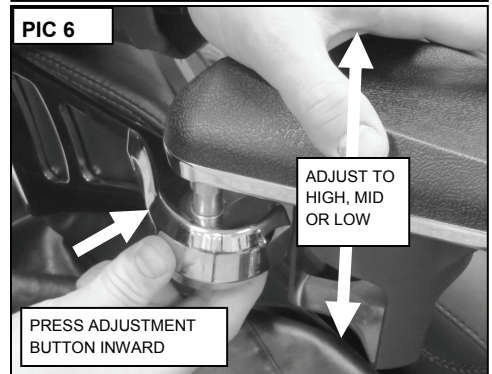
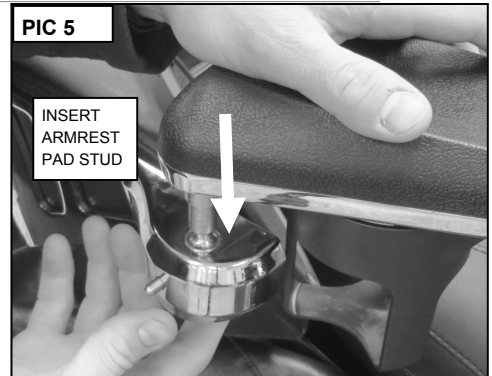
### INSTALL DRINK HOLDER IN LEFT-SIDE ARMREST PAD:

**STEP 16** Remove the shoulder bolt and wave washer from the bottom side of the drink holder.

**STEP 17** Refer to **PIC 8**. Align the drink holder with the threaded hole in the other pad; insert the shoulder bolt with wave washer through the drink holder; tighten the shoulder bolt and **torque to 15 IN LBS (1.69 NM)**.

### **NOTICE**

Periodic removal, cleaning, and greasing of armrest stud is recommended.





### **WARNING**

PASSENGER ARMRESTS ARE NOT A SAFETY RESTRAINING DEVICE. FAILURE TO HOLD ONTO THE MOTORCYCLE MAY RESULT IN SERIOUS INJURY OR DEATH.

THIS PRODUCT WAS DESIGNED FOR USE AS A PASSENGER ARMREST ONLY. DO NOT USE IT TO ASSIST MOUNTING OR DISMOUNTING THE MOTORCYCLE. DO NOT APPLY YOUR FULL BODY WEIGHT TO THE ARMRESTS TO ADJUST SEATING POSITION.

### **NOTICE**

It is the end user's responsibility to ensure that all fasteners (including pre-assembled) are tightened before operation of the motorcycle. Küryakyn will not provide warranty coverage on products or components lost or damaged due to improper installation or lack of maintenance. Periodic inspection and maintenance are required on all fasteners.

#### **LIMITED WARRANTY**

Küryakyn warrants that any Küryakyn products sold hereunder, shall be free of defects in materials & workmanship for a period of one (1) year from the date of purchase by the consumer excepting the following provisions:

1. Küryakyn shall have no obligation in the event the customer is unable to provide a receipt showing the date the customer purchased the product(s).
2. The product must be properly installed, maintained & operated under normal conditions.
3. Küryakyn shall not be liable for any consequential & incidental damages, including labor & paint, resulting from failure of a Küryakyn product, failure to deliver, delay in delivery, delivery in nonconforming condition, or for any breach of contract or duty between Küryakyn & a customer.
4. Küryakyn products are often intended for use in specific applications. Küryakyn makes no warranty if a Küryakyn product is used in applications other than intended.
5. Küryakyn electrical products are warranted for one (1) year from the date of purchase by the consumer. L.E.D.'s contained in components of Küryakyn products will be warranted for defects in materials & workmanship for 3 years from the date of purchase whereas all other components shall be warranted for one (1) year.
6. Merchandise purchased directly from Internet auction sites or any other third party seller is considered sold as is & shall not carry a Küryakyn warranty. All warranty claims must be directed to the original seller. If unsure please contact the seller to verify they are an authorized Küryakyn retailer.

#### **RETURN POLICY**

Merchandise determined to be defective may be returned up to one year from the date of purchase. Returns must be processed through original seller. Returned merchandise for any other reason other than warranty claims must be in like new condition & subject to a 20% restocking fee. All returns are subject to inspection for determination of full or partial credit. Any returned part that shows evidence of being used or installed contrary to manufacturer's instructions, &/or subjected to improper handling, packaging or return shipping by the customer, will not be eligible for exchange, refund or warranty consideration. All returned electrical items will be inspected & tested. If electrical item is deemed functional, no credit will be issued & item will be returned. All sales are final on discontinued or closeout merchandise.