



LIGHTED TRIM FOR ROAD GLIDE FAIRING 8649

FITS: '98 & UP ROAD GLIDE

PARTS INCLUDED

- 1 Right Lighted Trim
1 Left Lighted Trim
1 Wiring Kit including:
1 3-wire 6 pin Adapter for 05 earlier
2 Small Black 3-pin housing (male)
1 Amp 6 Circuit Plug
1 Amp 6 Circuit Receptacle
2 Turn Signal Pigtail-Run/Turn
2 Small Black 3-pin Housing
2 Large White 3-pin Amp Connector
2 Amp 3 Circuit Receptacle
4 Alcohol Pad
1 Installation Instructions

Please read and understand entire instructions before starting installation.

THANK YOU FOR CHOOSING KÜRYAKYN!

IN ORDER TO PROTECT YOU AND OTHERS FROM POSSIBLE INJURY AND/OR PROPERTY DAMAGE OR LOSS, PLEASE PAY CLOSE ATTENTION TO ALL INSTRUCTIONS, WARNINGS, CAUTIONS AND ATTENTION NOTES REGARDING THE USE AND CARE OF THIS PRODUCT.

WARNING! THIS INDICATION ALERTS YOU TO THE FACT THAT IGNORING THE CONTENTS DESCRIBED HEREIN CAN RESULT IN POTENTIAL DEATH OR SERIOUS INJURY.

CAUTION! This indication alerts you to the fact that ignoring the contents described herein can result in potential injury or material damage.

ATTENTION! This indication alerts you to the fact that ignoring the contents described herein may negatively affect product performance and functionality.

TOOLS SUGGESTED

Set of combination wrenches, and a set of screwdrivers.

STRICTLY OBSERVE THE FOLLOWING GUIDELINES IN ORDER TO USE THE PRODUCT PROPERLY AND AVOID POTENTIALLY DANGEROUS ACCIDENTS.

PROCEDURE

STEP 1 Read and understand all steps in the instructions before starting the installation. Park the motorcycle on a hard, level surface and turn off the ignition.

STEP 2 Remove the screws that secure the windscreen as shown in PIC 1; the screws and windscreen will be reinstalled later.

-cont.-

CUSTOMER SERVICE
877.370.3604 (toll free)

INSTALLATION QUESTIONS
techsupport@kuryakyn.com
or call 715.247.2983

LIMITED WARRANTY

Kuryakyn warrants that any Kuryakyn products sold hereunder, shall be free of defects in materials and workmanship for a period of one (1) year from the date of purchase by the consumer excepting the following provisions:

- Kuryakyn shall have no obligation in the event the customer is unable to provide a receipt showing the date the customer purchased the product(s).
• The product must be properly installed, maintained and operated under normal conditions.
• Kuryakyn makes no warranty, expressed or implied, with respect to any gold plated products.
• Kuryakyn shall not be liable for any consequential and incidental damages, including labor and paint, resulting from failure of a Kuryakyn product, failure to deliver, delay in delivery, delivery in nonconforming condition, or for any breach of contract or duty between Kuryakyn and a customer.
• Kuryakyn products are often intended for use in specific applications. Kuryakyn makes no warranty if a Kuryakyn product is used in applications other than intended.
• Kuryakyn electrical products are warranted for one (1) year from the date of purchase by the consumer. Components of Kuryakyn products containing L.E.D.s will be warranted for defects in materials and workmanship for 3 years from the date of purchase.
• Kuryakyn makes no warranty of any kind in regard to other manufacturer's products distributed by Kuryakyn. Kuryakyn will pass on all warranties made by the manufacturer and where possible, will expedite the claim on behalf of the customer, but ultimately, responsibility for disposition of the warranty claim lies with the manufacturer.

ABOUT OUR CATALOG

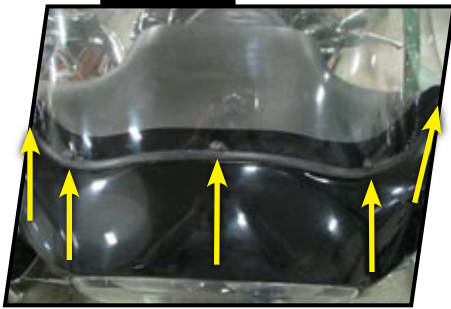
You'll find all our innovations for H-D, GL and Metric Cruisers in our annual catalogs. Order online today-select the "CATALOGS" icon. Each Kuryakyn® product comes with a Proof-of-Purchase good for a complimentary catalog. Details in packaging.

Be sure to ask your local dealer about other Kuryakyn® products, the motorcycle parts and accessories designed for riders by riders.

©2005 Kuryakyn USA® All Rights reserved.



PIC 1

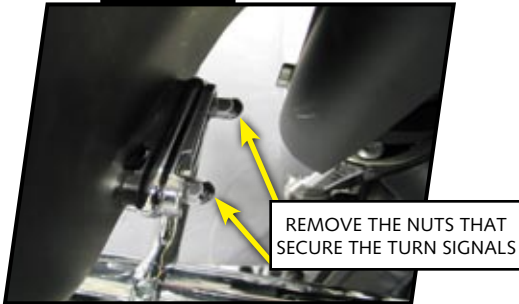


PIC 2

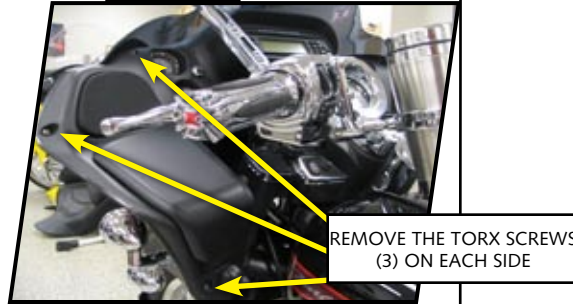


STEP 3 Remove the headlamp cover by gently pushing on the lower release tabs of the cover as shown in PIC 2 with a small flat screwdriver.

PIC 3



PIC 4



STEP 4 Remove the nuts on the inside of the fairing (shown in PIC 3) that secure both the right and left turn signals to the motorcycle.

STEP 5 Remove the six Torx screws (there are three on each side) that secure the inner fairing to the outer fairing as shown in PIC 4.

CAUTION! Avoid damage to the motorcycle. Protect painted surfaces with a soft cloth or blanket.

ATTENTION! Assistance is recommended to secure the outer fairing after all of the Torx screws have been removed to prevent damage.

STEP 6 Unplug the headlight connector and gently set the outer fairing on a soft and sturdy surface.

STEP 7 Disconnect the wiring harness from one side of the headlight (PIC 5)

STEP 8 Press in on the green tabs shown in PIC 5 to release the headlight from the fairing.

PIC 5



STEP 9 Remove the headlight from the fairing and set aside for later installation.

STEP 10 Test fit the new lighted trim to the fairing. Follow the contour line along the edges of the fairing. Slide the trim piece around until you feel that you have achieved the best fit. Make any "light" temporary markings that you will need to locate this same fitment.

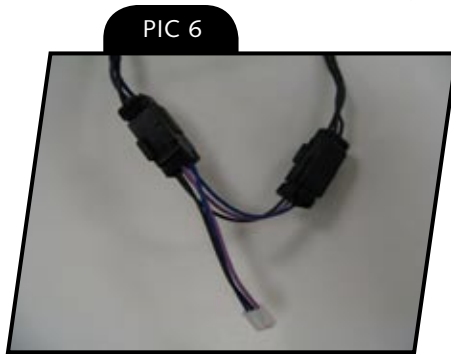
STEP 11 With the back of your fingernail, rub the adhesive backing to activate the catalyst.

STEP 12 Line up the markings that were previously made in step 10. Press and hold the trim piece in place for 1 minute to ensure full bonding contact. Full bonding will occur in 24 hours after application.

ATTENTION! The adhesive will not bond correctly if applied at temperatures less than 50°F. Do not attempt this installation in temperatures less than 50°F.

STEP 13 Repeat steps 10-12 on the opposite side.

STEP 14 Locate the stock turn signal connectors and separate them. There will be one violet wire, one blue wire and one black wire coming out of the connectors.



STEP 15 Connect the new wiring harness connectors to the proper side, male to female and vice versa. The small white connector will be used for the new-lighted fairing trim.

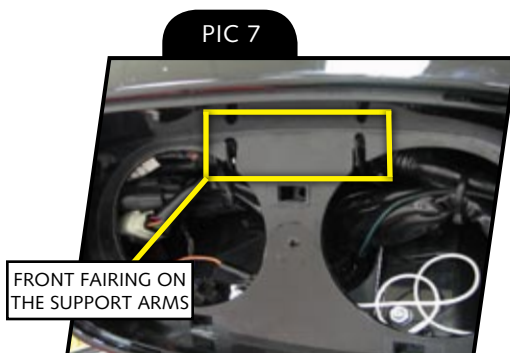
STEP 16 Route the wires from the lighted fairing trim in the headlight housing and leave them hang loosely on the inside of the fairing.

STEP 17 Secure the excess wires up out of the way inside the fairing.

STEP 18 Now take the fairing and place it up to the bike. Connect the plugs from the lighted fairing trim and connect them to the harness with the white plug that was placed between the turn signal connectors.

STEP 19 Hold the fairing in place on the bike; tuck the excess wires inside the fairing routing them through the notch in the fairing by the turn signal mounting holes.

STEP 20 Place the front of the fairing on the metal support arms shown in PIC 7 and the tabs on the edges of the outer fairing are on the inside of the tabs from the inner fairing.



STEP 21 Make sure that the wires are in the notch in the mounting bracket and tuck the remaining wire inside the fairing, routing it through the notch in the fairing; place the turn signal studs through the holes and start the nuts.

STEP 22 Repeat STEP 21 for the opposite side.

STEP 23 Turn the ignition to the “ON” position and check for proper operation of the lighted fairing trim.

STEP 24 Reinstall the six Torx screws that were removed in STEP 5 to secure the inner and outer fairing together.

STEP 25 Tighten the nuts to secure the turn signals to the motorcycle.

STEP 26 Route the headlight harness around the backside of the center bar between the two headlight holes and reconnect it to the headlight that it was removed earlier.

STEP 27 Connect the harness from the headlights to the main headlight harness.

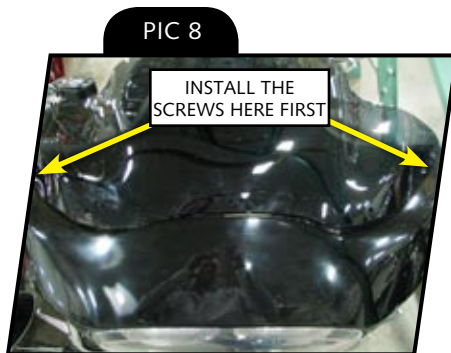
STEP 28 Place the headlights back into the fairing, ensuring that the green tabs “click” in place.

STEP 29 Reinstall the headlight cover, ensuring that the tabs “click” in place.

STEP 30 Place the windscreen on the motorcycle and install two screws in the rear corners first, as shown in PIC 8.

STEP 31 Rotate the windscreen down in place and install the remaining screws.

ATTENTION! It is the installer’s responsibility to ensure that all of the fasteners (including pre-assembled) are tightened before operation of the motorcycle. Kuryakyn will not warranty components lost due to improper installation. Periodic maintenance may be required.



Ride On!