






BRUTE HIGHWAY PEG MOUNT 1-1/4", BLACK

7616

THANK YOU FOR CHOOSING KÜRYAKYN!

PROTECT YOURSELF AND OTHERS FROM POSSIBLE INJURY AND PROPERTY DAMAGE OR LOSS. PAY CLOSE ATTENTION TO ALL INSTRUCTIONS, WARNINGS, CAUTIONS, AND NOTICES REGARDING THE INSTALLATION, USE, AND CARE OF THIS PRODUCT.


 WARNING	THIS INDICATION ALERTS YOU TO THE FACT THAT IGNORING THE CONTENTS DESCRIBED HEREIN CAN RESULT IN POTENTIAL DEATH OR SERIOUS INJURY.
 CAUTION	This indication alerts you to the fact that ignoring the contents described herein can result in minor or moderate potential injury.
 NOTICE	This indication alerts you to the fact that ignoring the contents described herein may negatively affect product performance and functionality or damage the product itself or the product to which it is being attached.

MAKE SURE THE FOLLOWING PARTS HAVE BEEN INCLUDED IN THE KIT:

- 2 Brute Highway Peg Mounts
- 1 Hardware Kit containing:
 - 4 1/4"-20 X 3/4" Socket Head Cap Screws
 - 2 3/8"-16 X 3/4" Socket Head Cap Screws
 - 2 "D" Spring Washers
- 1 Installation Instructions

YOU WILL ALSO NEED:

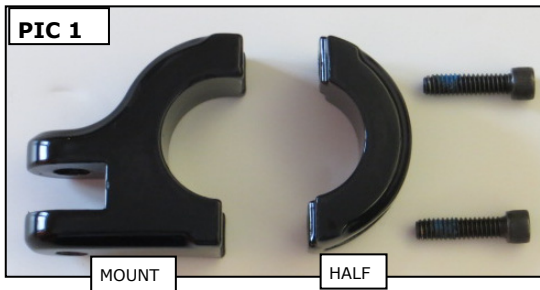
Set of hex wrenches

 **These installation instructions contain important information. Ensure that the end user receives this copy and is aware of its importance for future reference.**

STEP 1 Read and understand all steps in the instructions before starting the installation. Park the motorcycle on a hard, level surface and turn **IGN OFF**.

STEP 2 Locate one of the Brute Highway Peg Mounts in the kit.

STEP 3 Refer to **PIC 1 and 2 (on PAGE 2)**. Position the Mount and Clamp half together around the bar as shown.



NOTE: **Predetermine the mounting location of the Brute Mount; it may leave marks on the bar when fully installed.**

STEP 4 Secure the Clamp half to the Mount with two of the included 1/4"-20 Screws; leave the Screws snug for now to allow for adjustment.

CUSTOMER SERVICE

877.370.3604 (toll free)

INSTALLATION QUESTIONS

techsupport@kuryakyn.com
or call 715.247.2983

LIMITED WARRANTY

Kuryakyn warrants that any Kuryakyn products sold hereunder, shall be free of defects in materials and workmanship for a period of one (1) year from the date of purchase by the consumer excepting the following provisions:

- Kuryakyn shall have no obligation in the event the customer is unable to provide a receipt showing the date the customer purchased the product(s).
 - The product must be properly installed, maintained and operated under normal conditions.
 - Kuryakyn makes no warranty, expressed or implied, with respect to any gold plated products.
 - Kuryakyn shall not be liable for any consequential and incidental damages, including labor and paint, resulting from failure of a Kuryakyn product, failure to deliver, delay in delivery, delivery in nonconforming condition, or for any breach of contract or duty between Kuryakyn and a customer.
- Kuryakyn products are often intended for use in specific applications. Kuryakyn makes no warranty if a Kuryakyn product is used in applications other than intended.
- Kuryakyn electrical products are warranted for one (1) year from the date of purchase by the consumer. L.E.D.'S contained in components of Kuryakyn products will be warranted for defects in materials and workmanship for 3 years from the date of purchase where as all other components shall be warranted for one(1) year. This includes, but is not limited to; control modules, wiring, chrome & other components.

- Kuryakyn makes no warranty of any kind in regard to other manufacturer's products distributed by Kuryakyn. Kuryakyn will pass on all warranties made by the manufacturer and where possible, will expedite the claim on behalf of the customer, but ultimately, responsibility for disposition of the warranty claim lies with the manufacturer.

ABOUT OUR CATALOG

For purchasing Kuryakyn® products, you can receive a complete catalog free of charge. Send the Proof-of-Purchase below with your address to: Kuryakyn
454 County Road V V
Somerset, WI 54025-9031
Please indicate either Accessories Catalog for Harley-Davidson® or GL & Metric Cruisers.

Be sure to ask your local dealer about other Kuryakyn® products, the motorcycle parts and accessories designed for riders by riders.

©2005 Kuryakyn USA® All Rights reserved.

PROOF OF PURCHASE

STEP 5

Refer to **PIC 2**. Locate the new highway peg (**available separately at Kuryakyn.com**); following the instructions included with the peg, install the peg onto the mount;

Secure the new peg to the Mount with one of the included 3/8"-16 Screws;

a "D" Spring Washer has been included with this kit to take up any extra play between the mount and the peg, it may not be necessary to install it.

STEP 6

Position the Peg and Mount as desired;

tighten the 1/4"-20 Screws to secure the assembly to the bar.

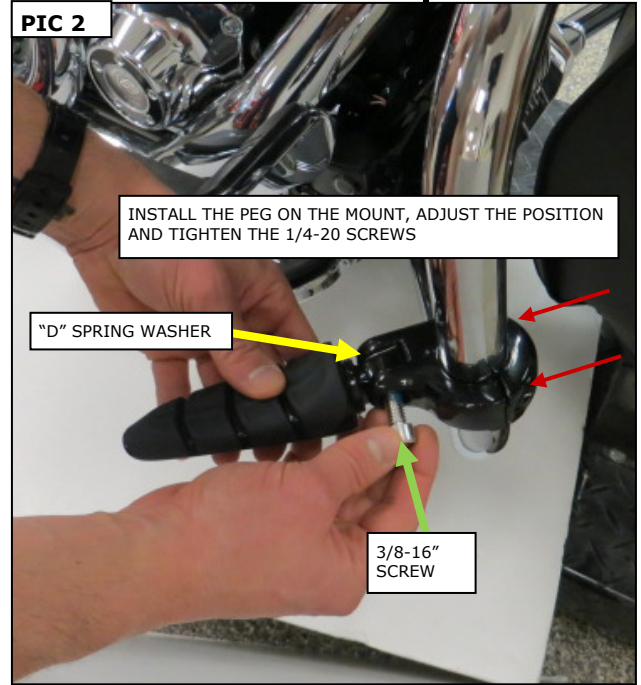
STEP 7

Ensure that the position of the new peg (folded and extended) and Mount do not interfere with the proper operation of the motorcycle **BEFORE** riding.

STEP 8

Repeat **STEPS 2 through 7** for the other side.

PIC 2



WARNING

BEFORE RIDING, ENSURE THAT THE INSTALLATION OF THIS PRODUCT DOES NOT INTERFERE WITH THE PROPER OPERATION OF THE MOTORCYCLE.

INSTALL THE HIGHWAY PEGS IN SUCH A MANNER THAT THEY WILL FOLD UP AND BACK IF STRUCK BY AN OBJECT. FAILURE TO ADJUST THE PEGS TO OPERATE IN THIS MANNER COULD RESULT IN LOSS OF CONTROL LEADING TO SERIOUS INJURY OR DEATH.

NOTICE

It is the end user's responsibility to ensure that all of the fasteners (including pre-assembled) are tightened before operation of the motorcycle. Kuryakyn will not provide warranty coverage on products or components lost or damaged due to improper installation or lack of maintenance. Periodic inspection and maintenance are required on all fasteners.

Ride On!