



L.E.D. HALO TRIM RING for 5-3/4" LIGHTS

7270

PARTS INCLUDED

- 1 Chrome Halo Trim Ring with Bottom Tab
- 1 L.E.D. Halo Light Ring
- 1 #8-32 X 1" Self Tapping Screw
- 1 Wire Harness
- 1 Wiring Kit Containing
 - 3 4" Black Nylon Cable Ties
 - 4 Female T-Tap Connectors
 - 4 Insulated Female Spade Connectors—**NOT USED**
 - 4 Male Spade Connectors
 - 3 Adhesive Foam Strips
 - 1 Dielectric Grease Pack
- 1 Installation Instructions

Please read and understand entire instructions before starting installation.

THANK YOU FOR CHOOSING KÜRYAKYN!

IN ORDER TO PROTECT YOU AND OTHERS FROM POSSIBLE INJURY AND/OR PROPERTY DAMAGE OR LOSS, PLEASE PAY CLOSE ATTENTION TO ALL INSTRUCTIONS, WARNINGS, CAUTIONS AND ATTENTION NOTES REGARDING THE USE AND CARE OF THIS PRODUCT.

WARNING! THIS INDICATION ALERTS YOU TO THE FACT THAT IGNORING THE CONTENTS DESCRIBED HEREIN CAN RESULT IN POTENTIAL DEATH OR SERIOUS INJURY.

ATTENTION! This indication alerts you to the fact that ignoring the contents described herein may negatively affect product performance and functionality.

CAUTION! This indication alerts you to the fact that ignoring the contents described herein can result in potential injury or material damage.

TOOLS SUGGESTED

Phillips Screwdriver, Flat Blade Screwdriver, Set of Combination Wrenches

STRICTLY OBSERVE THE FOLLOWING GUIDELINES IN ORDER TO USE THE PRODUCT PROPERLY AND AVOID POTENTIALLY DANGEROUS ACCIDENTS.

STEP 1 Read and understand all steps in the instructions before starting the installation. Park the motorcycle on a hard, level surface and turn off the ignition.

WARNING! YOU WILL BE WORKING AROUND THE ENGINE AND EXHAUST SYSTEM DURING INSTALLATION. ENSURE THAT THE ENGINE AND EXHAUST SYSTEM HAVE FULLY COOLED TO PREVENT INJURY.

CUSTOMER SERVICE

877.370.3604 (toll free)

INSTALLATION QUESTIONS

techsupport@kuryakyn.com
or call 715.247.2983

LIMITED WARRANTY

Kuryakyn warrants that any Kuryakyn products sold hereunder, shall be free of defects in materials and workmanship for a period of one (1) year from the date of purchase by the consumer excepting the following provisions:

- Kuryakyn shall have no obligation in the event the customer is unable to provide a receipt showing the date the customer purchased the product(s).
 - The product must be properly installed, maintained and operated under normal conditions.
 - Kuryakyn makes no warranty, expressed or implied, with respect to any gold plated products.
 - Kuryakyn shall not be liable for any consequential and incidental damages, including labor and paint, resulting from failure of a Kuryakyn product, failure to deliver, delay in delivery, delivery in nonconforming condition, or for any breach of contract or duty between Kuryakyn and a customer.
- Kuryakyn products are often intended for use in specific applications. Kuryakyn makes no warranty if a Kuryakyn product is used in applications other than intended.
- Kuryakyn electrical products are warranted for one (1) year from the date of purchase by the consumer. L.E.D.'S contained in components of Kuryakyn products will be warranted for defects in materials and workmanship for 3 years from the date of purchase where as all other components shall be warranted for one(1) year. This includes, but is not limited to; control modules, wiring, chrome & other components.
- Kuryakyn makes no warranty of any kind in regard to other manufacturer's products distributed by Kuryakyn. Kuryakyn will pass on all warranties made by the manufacturer and where possible, will expedite the claim on behalf of the customer, but ultimately, responsibility for disposition of the warranty claim lies with the manufacturer.

ABOUT OUR CATALOG

For purchasing Kuryakyn® products, you can receive a complete catalog free of charge. Send the Proof-of-Purchase below with your address to: Kuryakyn, P.O. Box 339, Somerset, WI 54025. Please indicate either Accessories Catalog for Harley-Davidson® or GL & Metric Cruisers.

Be sure to ask your local dealer about other Kuryakyn® products, the motorcycle parts and accessories designed for riders by riders.

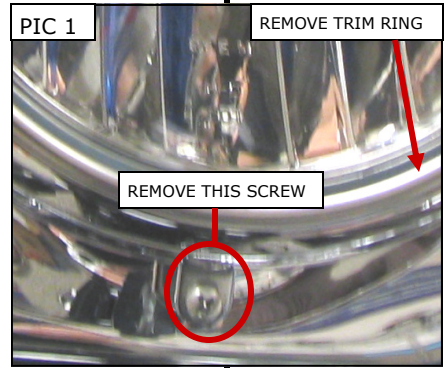
©2005 Kuryakyn USA® All Rights reserved.



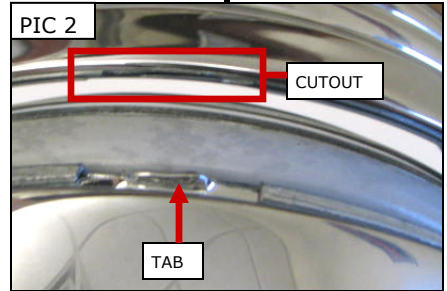
CAUTION! Avoid damage to the motorcycle. Protect painted surfaces with a soft cloth or blanket.

ATTENTION! A factory service manual may be helpful in performing this installation. Do not attempt to perform this installation if you are not confident in your ability to complete all of the steps in the procedure; consult a trained technician.

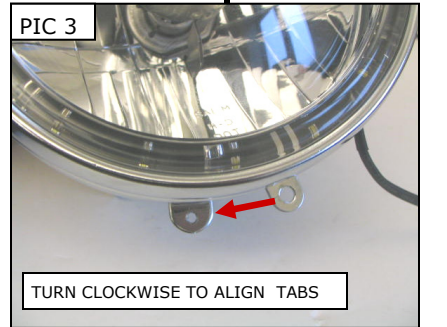
STEP 2 Remove the screw from the bottom of the headlight trim ring and remove the trim ring. PIC 1 Set the trim ring aside, it will not be reused.



STEP 3 Install the new Halo Trim Ring to the headlight by inserting the cutouts on the Trim Ring over the tabs on the headlight housing (PIC 2), then turning the Trim ring clockwise until the screw tabs are in line. PIC 3



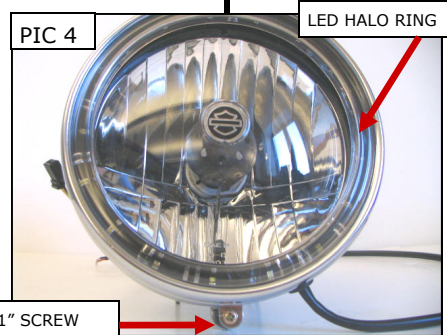
STEP 4 Secure the Trim Ring to the headlight housing using the included #8-32 X 1" Self Tapping Screw. The L.E.D. Halo Light Ring will seat next to the front of the Trim Ring. PIC 4



NOTE: If the headlight feels loose or rattles when assembled, disassemble the headlight and attach the included Adhesive Backed Foam Tape to the backing plate so it presses against the back of the headlight. PIC 5

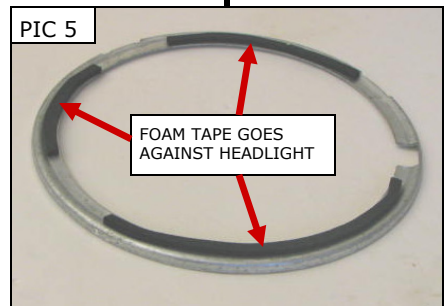
ATTENTION! It is the installer's responsibility to ensure that all of the fasteners (including pre-assembled) are tightened before operation of the motorcycle. Küryakyn will not issue a warranty on components lost due to improper installation. Periodic maintenance may be required.

STEP 4 Install one of the included male spades to the end of the RED and to the end of the BLACK wires coming from the L.E.D. Halo Light. Route the wire harness from the L.E.D. Halo light below the headlight and along the headlight wire harness.



STEP 5 Remove the seat.

STEP 6 Plug the extension harness into the leads from the Halo Light—Red wire to Red wire, Black wire to Black wire.



NOTE: Wrap each connection with electrical tape to help prevent shorting out.

ATTENTION! Küryakyn recommends the use of dielectric grease on electrical connections.

-cont.-

STEP 7 Loosen the front tank bolts and remove the rear tank bolt to allow you to raise the rear of the tank. PIC 6 and PIC 7 Route the extension harness under the tank and along the main harness to the battery.

CAUTION! When raising the fuel tank, care **MUST** be taken not to stretch, puncture or break the attached fuel line.

STEP 8 Using a test light or the wiring schematic for your bike, turn the key **"ON"** and locate a "keyed" 12 volt power wire (one that gets power when the key is turned on and loses power when the key is turned off) and a ground wire in the bike harness under the seat. Turn the key **"OFF"** and disconnect the battery. Install one of the included Female T-Tap connectors to each wire. PIC 8

STEP 9 Install one of the included Male Spade connectors to the RED wire in the extension harness and plug it into the Female T-Tap on the "keyed" power wire. PIC 8
Install one of the included Male Spade connectors to the BLACK wire in the extension harness and plug it into the Female T-Tap on the ground wire. PIC 8

STEP 10 Using the included Nylon Cable Ties, secure the extension harness out of the way of excessive heat and pinch points. Install the rear tank bolt. Tighten this and the front tank bolts securely.

ATTENTION! Secure all wiring away from any moving parts, pinch points or extreme heat. Küryakyn **WILL NOT** issue a warranty on any electrical component that fails due to pinched, crimped, broken, abraded, melted or frayed wires.

STEP 11 Reconnect the battery. Test the L.E.D. Halo Light for proper operation. Reinstall the seat.

WARNING! ENSURE PROPER LIGHT OPERATION BEFORE RIDING THE MOTORCYCLE. VISIBILITY IS A MAJOR CONCERN FOR MOTORCYCLISTS. A LIGHT MALFUNCTION COULD RESULT IN DEATH OR SERIOUS INJURY.

