

7237	BAHN IGNITION SWITCH COVER '07-'13 TOURING, TUXEDO	
INFORMATION AND SUPPORT	INFO@BAHNPRODUCTS.COM	866 294 2827

## ⚠ WARNING

**THIS INDICATION ALERTS YOU TO THE FACT THAT IGNORING THE CONTENTS DESCRIBED HEREIN CAN RESULT IN POTENTIAL DEATH OR SERIOUS INJURY.**

## CAUTION

**THIS INDICATION ALERTS YOU TO THE FACT THAT IGNORING THE CONTENTS DESCRIBED HEREIN CAN RESULT IN MINOR OR MODERATE POTENTIAL INJURY.**

## NOTICE

**This indication alerts you to the fact that ignoring the contents described herein may negatively affect product performance and functionality or damage the product itself or the product to which it is being attached.**

### MAKE SURE THE FOLLOWING PARTS HAVE BEEN INCLUDED IN THE KIT:

- 1 BAHN Ignition Switch Cover, Tuxedo
- 1 VHB™ Cover Adhesive
- 1 Alcohol Pad
- 1 Installation Instructions

### YOU WILL ALSO NEED:

Warm soapy water and a clean rag, small flat blade screwdriver or pick tool

## NOTICE

**These installation instructions contain important information. Ensure that the end user receives this copy and is aware of its importance for future reference.**

- STEP 1** Read and understand all steps in the instructions before starting the installation. Park the motorcycle on a hard, level surface and turn **IGN OFF**. Remove the main fuse.

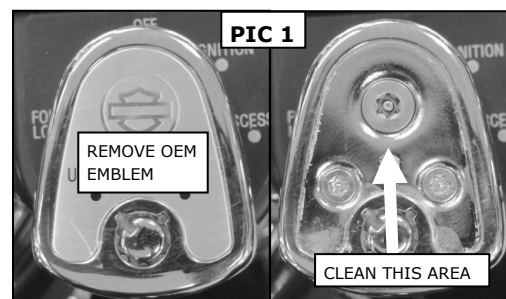
## ⚠ WARNING

**ACCIDENTAL VEHICLE START-UP COULD CAUSE DEATH OR SERIOUS INJURY, REMOVE THE MAIN FUSE BEFORE PROCEEDING.**

- STEP 2** Refer to **PIC 1**. Using a small flat blade screwdriver or pick tool, remove the OEM emblem; discard the emblem, it will not be reused. The emblem must be removed for the Cover Adhesive to stick properly.

- STEP 3** Refer to **PIC 1**. Using warm soapy water and a clean rag, remove all dirt and debris from the installation area; allow the area to dry completely. Wipe the installation area with the included Alcohol Pad to remove any wax or polish; allow the area to dry completely.

- STEP 4** Test fit the BAHN Ignition Switch Cover over the ignition switch. Note the alignment of the key holes for later; remove the Cover.

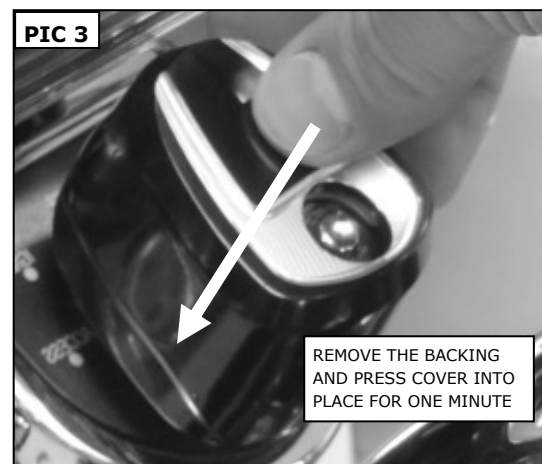
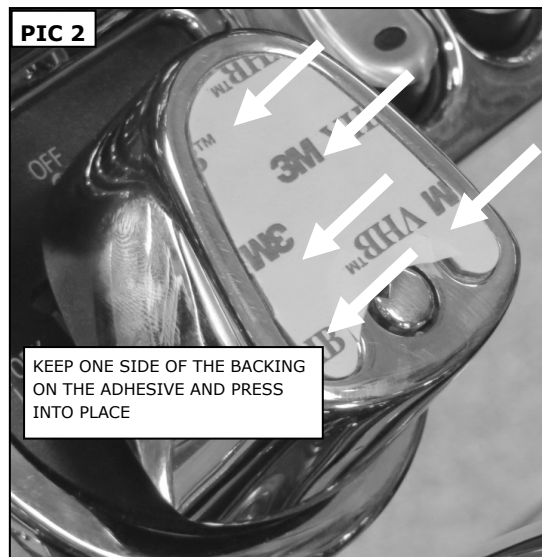


7237	BAHN IGNITION SWITCH COVER '07-'13 TOURING, TUXEDO	
INFORMATION AND SUPPORT	INFO@BAHNPRODUCTS.COM	866 294 2827

**STEP 5** Locate the included VHB™ Cover Adhesive. Rub the backing to activate the adhesive. Remove and discard one side of the backing. Refer to **PIC 2**. Apply the VHB™ Cover Adhesive to the ignition switch; ensure that it is positioned in the recess in the switch. Press the Adhesive onto the switch for one full minute. Full bond will occur in 24 hours.

**STEP 6** Remove and discard the remaining adhesive backing. Refer to **PIC 3**. Align the Cover and press it into place for one minute; full bonding will occur after 24 hours.

**STEP 7** Reinstall the main fuse. Ensure proper ignition switch, neck lock, and key functions and clearance **BEFORE** operating the motorcycle.



## TIPS FOR PROPER CARE:

Your new BAHN product is made out of anodized aluminum. Anodized aluminum requires special attention when cleaning. Some cleaning products or procedures can actually remove the anodized treatment which will lead to pitting in the aluminum.

Thoroughly clean the BAHN product often with a soft cloth, mild soap and water. Regular cleaning keeps contaminants from building up.

Rinse thoroughly with **FRESH** water.

Use only metal protection products that are formulated for anodized aluminum.

**DO NOT USE** bleach or chlorides to clean the BAHN product.

**DO NOT USE** products containing abrasives to clean the BAHN product. Never use steel or brass wool, wire brushes, polishing wheels, rubbing or polishing compounds on the BAHN product.

**DO NOT USE** concentrated alkaline based solutions to clean the BAHN product. Many detergents are alkaline based.

### LIMITED WARRANTY

Küryakyn warrants that any Küryakyn products sold hereunder, shall be free of defects in materials & workmanship for a period of one (1) year from the date of purchase by the consumer excepting the following provisions:

1. Küryakyn shall have no obligation in the event the customer is unable to provide a receipt showing the date the customer purchased the product(s).
2. The product must be properly installed, maintained & operated under normal conditions.
3. Küryakyn shall not be liable for any consequential & incidental damages, including labor & paint, resulting from failure of a Küryakyn product, failure to deliver, delay in delivery, delivery in nonconforming condition, or for any breach of contract or duty between Küryakyn & a customer.
4. Küryakyn products are often intended for use in specific applications. Küryakyn makes no warranty if a Küryakyn product is used in applications other than intended.
5. Küryakyn electrical products are warranted for one (1) year from the date of purchase by the consumer. L.E.D.'s contained in components of Küryakyn products will be warranted for defects in materials & workmanship for 3 years from the date of purchase where as all other components shall be warranted for one (1) year. This includes, but is not limited to; control modules, wiring, chrome & other components.
6. Exhaust systems are warranted for manufacturing defects only. There is no warranty on exhaust pipes & mufflers with regard to any discoloration. Discoloration or "blue-ing" is caused by tuning characteristics, exhaust timing, carburetor jetting, overheating, etc. & is not caused by defective manufacturing.
7. Küryakyn makes no warranty of any kind in regard to other manufacturer's products distributed by Küryakyn. Küryakyn will pass on all warranties made by the manufacturer & where possible, will expedite the claim on behalf of the customer, but ultimately, responsibility for disposition of the warranty claim lies with the manufacturer.
8. Merchandise purchased directly from internet auction sites or any other third party seller is considered sold as is & shall not carry a Küryakyn warranty. All warranty claims must be directed to the original seller. If unsure please contact the seller to verify they are an authorized Küryakyn retailer.