

## INSTALLATION INSTRUCTIONS

### TRAILER HITCH FOR GL1800

6771

#### THANK YOU FOR CHOOSING KURYAKYN!

Protect yourself and others from possible injury and property damage or loss. Pay close attention to all instructions, warnings, cautions, and notices regarding the installation, use, and care of this product.

**WARNING** THIS INDICATION ALERTS YOU TO THE FACT THAT IGNORING THE CONTENTS DESCRIBED HEREIN CAN RESULT IN POTENTIAL DEATH OR SERIOUS INJURY.

**CAUTION** THIS INDICATION ALERTS YOU TO THE FACT THAT IGNORING THE CONTENTS DESCRIBED HEREIN CAN RESULT IN MINOR OR MODERATE POTENTIAL INJURY.

**NOTICE** THIS INDICATION ALERTS YOU TO THE FACT THAT IGNORING THE CONTENTS DESCRIBED HEREIN MAY NEGATIVELY AFFECT PRODUCT PERFORMANCE AND FUNCTIONALITY OR DAMAGE THE PRODUCT ITSELF OR THE PRODUCT TO WHICH IT IS BEING ATTACHED.

#### ENSURE THAT THE FOLLOWING PARTS HAVE BEEN INCLUDED IN THE KIT:

1	Left Side Rear Brace	<b>CONTINUED</b>	Hardware Kit, containing:
1	Right Side Rear Brace		1 3/4" Split Lock Washer
1	Left Side Front Brace		1 3/4-16 Nut
1	Right Side Front Brace		1 1-7/8" Ball Hitch
1	Hitch Receiver		1 Hitch Pin
1	Hitch Mount		1 3" Hair Pin Clip
1	Hardware Kit, containing:		4 18 Gold Wing Hitch Rubber Spacer
1	1 M6 x 1.0 x 12mm Flange Hex Head Bolt		4 18 Gold Wing Hitch Washer
2	2 M12 x 1.75 x 30mm Flanged Hex Bolt		2 M6 x 1.0 x 18mm Hex Head Cap Screw
2	2 M12 x 1.75 Flanged Nylon Hex Nut		2 M6 Nylon Insert Locknut

#### YOU WILL ALSO NEED:

Metric hex bit and socket set, ratchet extension set, combination wrench set, ft-lbs (Nm) torque wrench, blue loctite

**NOTICE** THESE INSTALLATION INSTRUCTIONS CONTAIN IMPORTANT INFORMATION. ENSURE THE END USER RECEIVES THIS COPY AND IS AWARE OF ITS IMPORTANCE FOR FUTURE USE.

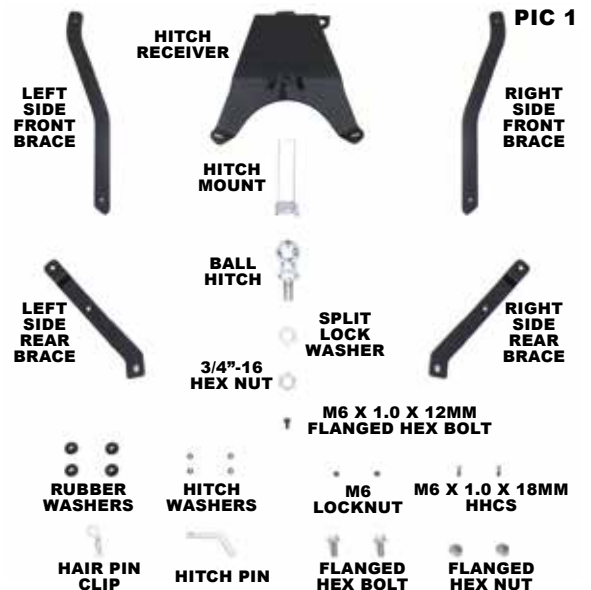
**WARNING** NO MOTORCYCLE MANUFACTURER HAS APPROVED OR ENDORSED KURYAKYN TRAILER HITCHES. USE OF A TRAILER OR TRAILER HITCH ON ANY MOTORCYCLE MAY VOID YOUR WARRANTY AND MAY INCREASE YOUR CHANCES OF INJURY OR ACCIDENT SITUATION.

**WARNING** YOU WILL BE WORKING AROUND THE ENGINE AND EXHAUST SYSTEM DURING INSTALLATION. ENSURE THAT THE ENGINE AND EXHAUST SYSTEM HAVE FULLY COOLED TO PREVENT INJURY.

**WARNING** TOWING A TRAILER BEHIND A MOTORCYCLE INCREASES THE LIKELIHOOD OF INJURY OR DEATH TO BOTH OPERATOR AND PASSENGER.

**WARNING** IF THE TRAILER FAILS TO HANDLE IN A SAFE AND PREDICTABLE MANNER, STOP THE MOTORCYCLE AND DO NOT OPERATE WITH THE TRAILER UNTIL YOU HAVE DETERMINED AND CORRECTED THE PROBLEM.

**WARNING** INSPECT ALL FASTENERS AND COMPONENTS BEFORE EVERY USE.



KURYAKYN.COM

## INSTALLATION INSTRUCTIONS

### TRAILER HITCH FOR GL1800

6771

-CONTINUED-

**NOTICE**

KURYAKYN IS NOT AWARE OF ANY CURRENT STATE OR FEDERAL GUIDELINES FOR PULLING A TRAILER WITH A MOTORCYCLE. WE SUGGEST WHEN PULLING AND LOADING A TRAILER, DO NOT EXCEED THE MOTORCYCLE MANUFACTURER'S GROSS VEHICLE WEIGHT LIMITS.

**STEP 1** Read and understand all steps in the instructions before starting the installation. Park the motorcycle on a hard, level surface and turn off the ignition. Let motorcycle cool.

**FOR EASE OF INSTALLATION YOU MAY WANT TO REMOVE THE MUFFLERS. REFER TO YOUR MOTORCYCLE'S SERVICE MANUAL FOR ASSISTANCE ON REMOVAL OF MUFFLERS.**

**STEP 2** Refer to PIC 2 and 3. Unfasten Rear Fender A from the rear of the motorcycle and disconnect the license plate light. Remove Rear Fender A from the motorcycle. Set the assembly and mounting hardware aside, they will be reused.

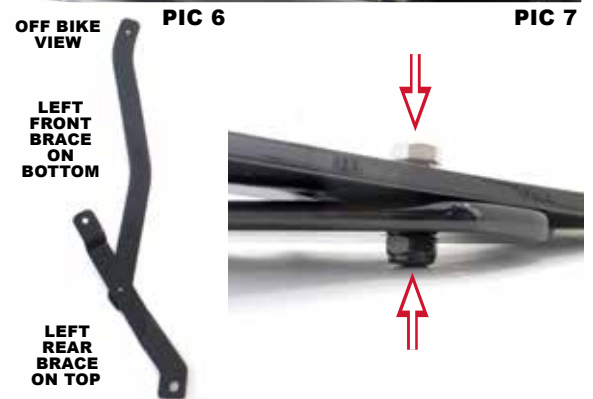
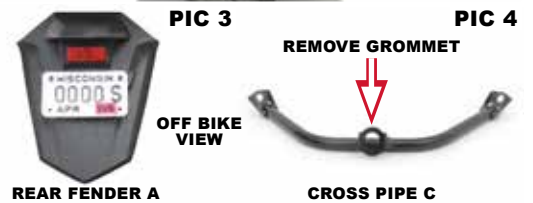
**STEP 3** Refer to PIC 2 and 4. Remove Cross Pipe C. Remove the rubber grommet from the middle of the Cross Pipe C. Set the rubber grommet and mounting hardware aside, they will be reused.

**STEP 4** Refer to PIC 5. Starting on the left (clutch) side, remove two (2) socket bolts and grommet from the inside of the saddlebag on the bottom. Set the socket bolts aside, they will be reused.

**STEP 5** Locate provided Left Side Rear and Front Brace, and one (1) M6 x 1.0 x 18mm Hex Head Cap Screw and one (1) M6 Locknut.

**STEP 6** Refer to PIC 6 and 7. Align the rear mounting hole of the front brace under the middle mounting hole on the rear brace. Insert the Screw through the top of the aligned mounting holes and secure it in place with the Locknut. Do not fully tighten hardware.

**STEP 7** Refer to PIC 8 and 9. Locate provided two (2) Hitch Rubber Spacers and two (2) Hitch Washers, as well as the two (2) stock bolts that were removed from the saddlebag in Step 3. Place a washer and spacer onto each stock bolt. Apply a small amount of blue loctite to the threads of the bolts.



## INSTALLATION INSTRUCTIONS

### TRAILER HITCH FOR GL1800

6771

-CONTINUED-

**STEP 8** Refer to PIC 10. Align the front mounting hole of the front brace with the front mounting hole of the saddlebag, and the front mounting hole of the rear brace with the rear mounting hole of the saddlebag. Be sure the braces are placed in between the saddlebag and the saddlebag mount.

**STEP 9** Loosely fasten the brace assembly to the bottom of the saddlebag using the hardware assembly from Step 8.

**STEP 10** Repeat steps 4 through 9 on the right (brake) side, using the provided Right Side Front and Back Brace.

**STEP 11** Refer to PIC 11. Locate provided Hitch Receiver and Cross Pipe C mounting hardware that was removed in Step 3. Using the top two mounting holes of the Hitch Receiver, align and loosely fasten it to the mounting holes where the Cross Pipe C was attached on the bike.

**STEP 12** Refer to FIG 1 and 2. Locate provided two (2) M12 x 1.75 x 30mm Flanged Hex Bolt and two (2) M12 x 1.75 Flanged Hex Nut. On the back side of the Hitch Receiver insert the Hex Bolts through the top of the aligned mounting holes of the receiver hitch and rear braces, and secure them in place with the Hex Nut. Do not fully tighten.

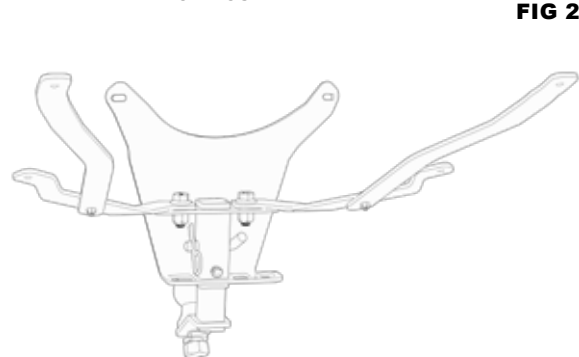
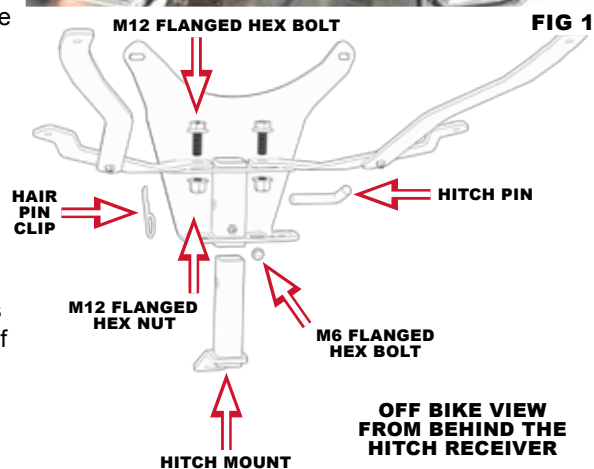
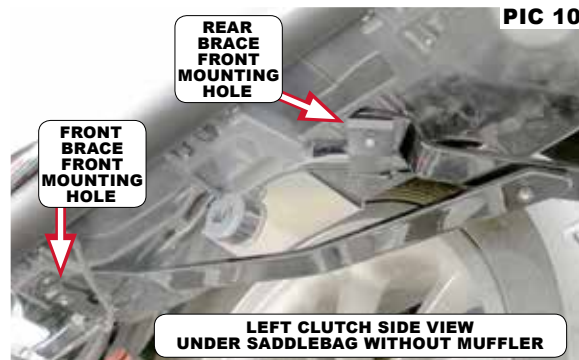
*Note: Attach a ratchet extension piece to the ratchet and insert it through the bottom of the Hitch Receiver's safety chain hole, then attach the socket to the extension piece.*

**STEP 13** Fully tighten all hardware in the following order:

- Hex bolt and lock nut fastening the front and rear braces
- Stock bolts in the saddlebags fastening to the braces
- Stock bolts fastening the Hitch Receiver to the rear of the motorcycle
- Flanged Hex Bolt and Hex Nut fastening the Hitch Receiver to the Rear Braces

**STEP 14** Refer to FIG 1 and 2. Locate provided Hitch Mount, Hitch Pin and Hair Pin Clip. Insert the Hitch Mount into the bottom of the Hitch Receiver. On the back side of the receiver align the pin hole of the receiver and the mount and insert the hitch pin. Secure it in place by attaching the hair pin clip through the small hole located on the end of the hitch pin.

**STEP 15** Refer to FIG 1 and 2. Locate provided M6 x 1.0 x 12mm Flange Hex Head. Insert the bolt on the back side of the hitch receiver, behind the section where the hitch mount is inserted. Fully tighten hardware.



## INSTALLATION INSTRUCTIONS

### TRAILER HITCH FOR GL1800

6771

-CONTINUED-

- STEP 16** Refer to PIC 12 and 13. Locate provided Ball Hitch, Split Lock Washer, and 3/4"-16 Hex Nut. Align the Ball Hitch with the mounting hole on the Hitch Mount, and insert it through the top. Place the split lock washer onto the protruding end of the ball hitch, followed by the hex nut. Fully tighten hardware.

**TORQUE VALUE FOR BALL HITCH:**  
220 FT-LBS (298.28 NM)

- STEP 17** Refer to PIC 14. Locate the rubber grommet that was removed from the Cross Pipe C in Step 3. Insert the grommet into the hole located on the front of the receiver hitch near the top.

- STEP 18** Double check the hardware. Be sure all hardware is fully tightened.
- Ball hitch to hitch mount connection (220 FT-LBS)
  - Receiver hitch to rear braces connection
  - Receiver hitch to rear of motorcycle connection
  - Rear braces to front braces connection
  - Front and rear braces to saddlebags connection

- STEP 19** Refer to PIC 15. Locate the Rear Fender A assembly and hardware that was removed in Step 2. Connect the license plate light and reinstall the Rear Fender A. Fully tighten hardware.

- STEP 20** Reinstall mufflers, if applicable.

#### NOTICE

**IT IS THE INSTALLER'S RESPONSIBILITY TO ENSURE THAT ALL OF THE FASTENERS (INCLUDING PER-ASSEMBLED) ARE TIGHTENED BEFORE OPERATION OF THE MOTORCYCLE. KURYAKYN WILL NOT PROVIDE WARRANTY COVERAGE ON PRODUCTS OR COMPONENTS LOST DUE TO IMPROPER INSTALLATION OR LACK OF MAINTENANCE. PERIODIC INSPECTION AND MAINTENANCE ARE REQUIRED ON ALL FASTENERS.**



## INSTALLATION INSTRUCTIONS

### TRAILER HITCH FOR GL1800

6771

-CONTINUED-

#### LIMITED WARRANTY

Kuryakyn warrants that any Kuryakyn products sold hereunder, shall be free of defects in materials & workmanship for a period of one (1) year from the date of purchase by the consumer excepting the following provisions:

1. Kuryakyn shall have no obligation in the event the customer is unable to provide a receipt showing the date the customer purchased the product(s).
2. The product must be properly installed, maintained & operated under normal conditions.
3. Kuryakyn shall not be liable for any consequential & incidental damages, including labor & paint, resulting from failure of a Kuryakyn product, failure to deliver, delay in w in nonconforming condition, or for any breach of contract or duty between Kuryakyn & a customer.
4. Kuryakyn products are often intended for use in specific applications. Kuryakyn makes no warranty if a Kuryakyn product is used in applications other than intended.
5. Kuryakyn electrical products are warranted for one (1) year from the date of purchase by the consumer. L.E.D.'s contained in components of Kuryakyn products will be warranted for defects in materials & workmanship for 3 years from the date of purchase whereas all other components shall be warranted for one (1) year.
6. All warranty claims must be directed to the place of purchase. Merchandise sold through internet auction sites or any other unauthorized reseller shall not carry a Kuryakyn warranty. If unsure, please contact the place of purchase to verify they are an authorized Kuryakyn reseller.

#### RETURN POLICY

Merchandise determined to be defective may be returned up to one year from the date of purchase. Returns must be processed through original seller. Returned merchandise for any other reason other than warranty claims must be in like new condition & subject to a 20% restocking fee. All returns are subject to inspection for determination of full or partial credit. Any returned part that shows evidence of being used or installed contrary to manufacturer's instructions, &/or subjected to improper handling, packaging or return shipping by the customer, will not be eligible for exchange, refund or warranty consideration. All returned electrical items will be inspected & tested. If electrical item is deemed functional, no credit will be issued & item will be returned. All sales are final on discontinued or closeout merchandise.

©2015 KURYAKYN HOLDINGS, LLC ALL RIGHTS RESERVED

KURYAKYN, KURYAKYN K logo and the marks appearing on this instruction sheet are registered and common law trademarks of Kuryakyn Holdings except noted third-party trademarks. A full listing of trademarks and trademark registrations owned by Kuryakyn Holdings can be found at [www.kuryakyn.com/legal-notice](http://www.kuryakyn.com/legal-notice).

Emissions Notice: The California Air Resources Board (CARB) does not permit the use of aftermarket emission-related parts(s) that alter the performance of OEM emission-related devices unless CARB has issued an Executive Order, other than on racing vehicles on closed courses. Check your local laws and manufacturer's information.

Listed Manufacturers and product model names are for reference only. All product and company names are trademarks or registered trademarks of their respective holders. Use of them does not imply any affiliation with or endorsement by them. All specifications are subject to change without notice.

For additional information on third-party product and company names, please consult our Web page at [www.kuryakyn.com/legal-notice](http://www.kuryakyn.com/legal-notice)