



INSTALLATION

CLAMP-ON FORK MOUNTED DRIVING LIGHTS

5012

PARTS INCLUDED

- 2 Driving Lights
- 2 Front Mount Clamps-38mm/41mm
- 1 Hardware Kit Including:
 - 2 Thick Spacers
 - 2 Thin Spacers
 - 2 Pivot Dome Washers
 - 2 3/8-16 Serrated Hex Nut
- 1 Wiring Kit for Driving Lights Containing:
 - 6 Female T-Tap Connectors
 - 6 Male Spade Connectors
 - 4 Female Bullet Connectors
 - 4 Male Bullet Connectors
 - 1 Pin Terminal
 - 1 Contact Receptacle
 - 10 6" Black Cable Ties
 - 2 Dielectric Grease Packets
- 1 Installation Instructions

Please read and understand entire instructions before starting installation.

THANK YOU FOR CHOOSING KÜRYAKYN!

IN ORDER TO PROTECT YOU AND OTHERS FROM POSSIBLE INJURY AND/OR PROPERTY DAMAGE OR LOSS, PLEASE PAY CLOSE ATTENTION TO ALL INSTRUCTIONS, WARNINGS, CAUTIONS AND NOTICES REGARDING THE USE AND CARE OF THIS PRODUCT.

WARNING

THIS INDICATION ALERTS YOU TO THE FACT THAT IGNORING THE CONTENTS DESCRIBED HEREIN CAN RESULT IN POTENTIAL DEATH OR SERIOUS INJURY.

NOTICE

This indication alerts you to the fact that ignoring the contents described herein may negatively affect product performance and functionality.

CAUTION

This indication alerts you to the fact that ignoring the contents described herein can result in potential injury.

NOTICE

IF INSTALLING THIS PRODUCT FOR ANOTHER PARTY, PLEASE MAKE SURE THEY RECEIVE THIS COPY OF THE INSTALLATION INSTRUCTIONS SO THEY ARE AWARE OF THE IMPORTANT INFORMATION CONTAINED IN THEM.

TOOLS SUGGESTED

Set of Hex Wrenches, Wire Stripper/Crimper, Test Light

STRICTLY OBSERVE THE FOLLOWING GUIDELINES IN ORDER TO USE THE PRODUCT PROPERLY AND AVOID POTENTIALLY DANGEROUS ACCIDENTS.

STEP 1

Read and understand all steps in the instructions before starting the installation. Park the motorcycle on a hard, level surface and turn off the ignition.

CUSTOMER SERVICE

877.370.3604 (toll free)

INSTALLATION QUESTIONS

techsupport@kuryakyn.com
or call 715.247.2983

LIMITED WARRANTY

Küryakyn warrants that any Küryakyn products sold hereunder, shall be free of defects in materials and workmanship for a period of one (1) year from the date of purchase by the consumer excepting the following provisions:

- Küryakyn shall have no obligation in the event the customer is unable to provide a receipt showing the date the customer purchased the product(s).
- The product must be properly installed, maintained and operated under normal conditions.
- Küryakyn makes no warranty, expressed or implied, with respect to any gold plated products.
- Küryakyn shall not be liable for any consequential and incidental damages, including labor and paint, resulting from failure of a Küryakyn product, failure to deliver, delay in delivery, delivery in nonconforming condition, or for any breach of contract or duty between Küryakyn and a customer.
- Küryakyn products are often intended for use in specific applications. Küryakyn makes no warranty if a Küryakyn product is used in applications other than intended.

- Küryakyn electrical products are warranted for one (1) year from the date of purchase by the consumer. L.E.D.'S contained in components of Küryakyn products will be warranted for defects in materials and workmanship for 3 years from the date of purchase where as all other components shall be warranted for one(1) year. This includes, but is not limited to; control modules, wiring, chrome & other components.
- Küryakyn makes no warranty of any kind in regard to other manufacturer's products distributed by Küryakyn. Küryakyn will pass on all warranties made by the manufacturer and where possible, will expedite the claim on behalf of the customer, but ultimately, responsibility for disposition of the warranty claim lies with the manufacturer.

ABOUT OUR CATALOG

For purchasing Küryakyn® products, you can receive a complete catalog free of charge.

Send the Proof-of-Purchase below with your address to: Küryakyn, P.O. Box 339, Somerset, WI 54025.

Please indicate either Accessories Catalog for Harley-Davidson® or GL & Metric Cruisers.

Be sure to ask your local dealer about other Küryakyn® products, the motorcycle parts and accessories designed for riders by riders.

©2005 Küryakyn USA® All Rights reserved.



kuryakyn.com

NOTE: Kuryakyn recommends using one of our Driving Light and Switch/Relay Harnesses, P/N 2202 or P/N 2328, to power the lights to prevent over-loading a circuit on the bike. You may install the black power wires from the driving lights using the female t-tap connectors and connect them to a "keyed" power source. The lights draw approximately 6 amps. **Before connecting the power wires to a circuit check to make sure that the circuit can handle the additional load.**

⚠ WARNING IT IS THE INSTALLERS RESPONSIBILITY TO ENSURE THAT THE INSTALLATION OF THIS ACCESSORY DOES NOT EXCEED THE MAXIMUM AMPERAGE OF THE CHOSEN CIRCUIT. EXCEEDING THE MAXIMUM ALLOWABLE AMPERAGE MAY LEAD TO CIRCUIT FAILURE WHICH COULD RESULT IN SERIOUS INJURY OR DEATH.

⚠ WARNING A FACTORY SERVICE MANUAL WILL BE HELPFUL IN PERFORMING THIS INSTALLATION. DO NOT ATTEMPT TO PERFORM THIS INSTALLATION IF YOU ARE NOT CONFIDENT IN YOUR ABILITY TO COMPLETE ALL OF THE STEPS IN THE PROCEDURE; CONSULT A TRAINED TECHNICIAN. IMPROPER INSTALLATION COULD RESULT IN SERIOUS INJURY OR DEATH.

STEP 2 Determine the left and right side clamps. For a cleaner look, you will want the mounting holes to be on the inside of the forks.

STEP 3 Take the black power wire and route that through the top of the mounting clamp and in to the inside of the clamp housing. (PIC 1)

STEP 4 Place the driving light stud through the mounting clamp, On the bottom side place the Pivot Dome Washers on the stud (round side in first) and secure it with the provided 3/8-16 Serrated Hex Nut.

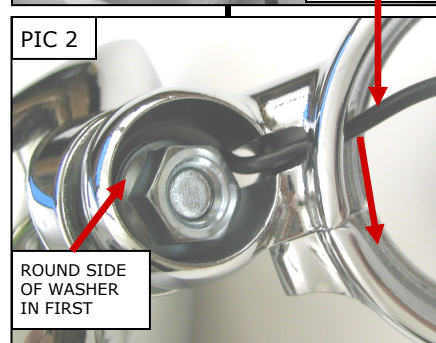
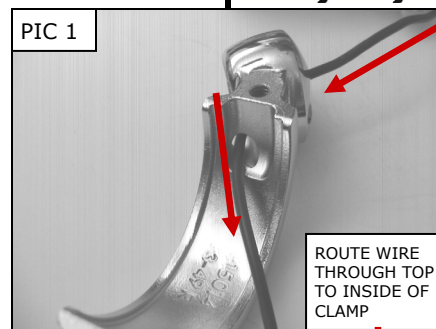
STEP 5 Put the driving light up to the fork and determine which of the two spacer you will need to gain the correct fit. (39mm forks require thicker spacers, 41mm forks require thinner spacers)

STEP 6 Once you have the proper spacers, you can mount the driving lights to the forks. Make sure that you route the wires in the groove that is on the inside of the clamps and out the back hole located on the inside of the clamp half. PIC 2 and PIC 3 Make sure the wire is not pinched and can move freely.

NOTICE Secure all wiring from the newly installed and/or from existing parts, away from any moving parts, pinch points or extreme heat. Kuryakyn WILL NOT issue a warranty on any electrical component that fails due to pinched, crimped, broken, abraded, melted or frayed wires.

STEP 7 Repeat assembly on the opposite side of the forks. Tighten the clamps securely.

-cont.-



STEP 8

Turn the handlebars lock to lock to make sure there is clearance between the lights and any component on the motorcycle.

⚠ WARNING

TURN THE FORK LOCK TO LOCK TO CHECK FOR CLEARANCE BETWEEN THE LIGHTS AND ANY OTHER COMPONENT ON THE MOTORCYCLE. INSUFFICIENT CLEARANCE MAY CAUSE LOSS OF CONTROL RESULTING IN SERIOUS INJURY OR DEATH

NOTICE

It is the installer's responsibility to ensure that there is adequate clearance between the Fork Mounted Driving Lights and any painted surfaces or component on the motorcycle. Küryakyn is not responsible for any damage due to inadequate clearance.

NOTICE

It is the installer's responsibility to ensure that all of the fasteners (including pre-assembled) are tightened before operation of the motorcycle. Küryakyn will not provide warranty coverage on products or components lost due to improper installation or lack of maintenance. Periodic inspection and maintenance are required on all fasteners.

NOTE: Küryakyn recommends using one of our Driving Light and Switch/Relay Harnesses, P/N 2202 or P/N 2328, to power the lights to prevent over-loading a circuit on the bike. If you are using one of the Driving Light Switch/Relays, proceed to those instructions for wiring. If using a "KEYED" power wire on the bike, **first determine the power wires to that circuit can handle the additional load**, then proceed to Step 9.

STEP 9

Using a test light or wiring schematic, with the key in the "ON" position, locate a "keyed" (has power with the key "ON", loses power with the key "OFF") 12-volt power wire to power the driving lights. Once you have located a keyed 12-volt power source, turn the key to the "OFF" position and disconnect the battery.

⚠ CAUTION

Avoid potential electrical shock! Disconnect the battery before starting this procedure.

NOTICE

Kuryakyn recommends the use of dielectric grease on electrical connections.

STEP 10

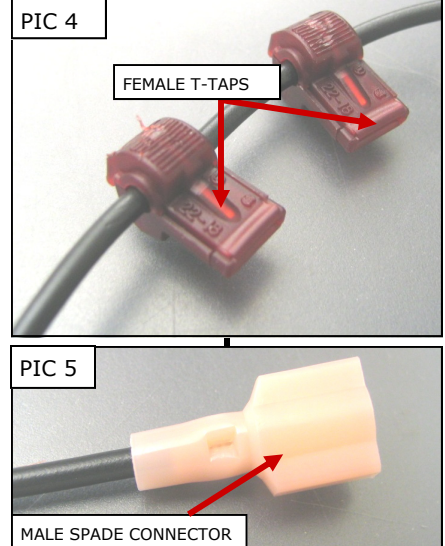
Once you have located a keyed 12-volt power source, take the two female T-Tap connectors and place them on the desired power wire. PIC 4

STEP 11

Take the black power wires and cut them to desired length, strip the ends and place a male spade connector on it and crimp it securely. PIC 5

STEP 12

Place a small amount of dielectric grease on the female T-Tap connectors and insert the male spade connectors the female T-Tap connectors installed on the "keyed" power wire.



STEP 13 These driving lights are self-grounding so you may not need to hook up any negative leads.

NOTE: If it is necessary, run a ground lead from the new lights or from the front fork, to ground on the frame, if the forks are not properly grounded.

STEP 14 Once all connections are connected, reconnect the battery. Turn the key to the "ON" position and check to ensure the lights work properly.

WARNING ENSURE PROPER LIGHT OPERATION BEFORE RIDING THE MOTORCYCLE. VISIBILITY IS A MAJOR CONCERN FOR MOTORCYCLISTS. A LIGHTING MALFUNCTION COULD RESULT IN DEATH OR SERIOUS INJURY.



STEP 15 If lights do not work, go over the wire connections and check all plugs to see if they are plugged in correctly. You may also have to use a test light again check if the spade/T-Tap connectors are in the proper locations.

STEP 16 When you are satisfied with all the wiring, you can use the supplied cable ties and secure the wires out of harms way.

NOTICE Secure all wiring from the newly installed and/or from existing parts, away from any moving parts, pinch points or extreme heat. Küryakyn WILL NOT issue a warranty on any electrical component that fails due to pinched, crimped, broken, abraded, melted or frayed wires.

STEP 17 To aim the driving lights simply loosen the bottom 3/8"-16 Serrated Hex Nut (PIC 5) that secures the light to the mount, and point to the light to desired location. Retighten the 3/8"-16 Serrated Hex Nut and repeat the same process for the opposite side.

WARNING IT IS THE INSTALLERS RESPONSIBILITY TO ADJUST THE NEW DRIVING LIGHTS TO THE PATTERN RECOMMENDED IN THE SERVICE MANUAL FOR THE HEADLIGHT LOW BEAM. FAILURE TO PROPERLY ADJUST THE LIGHT PATTERN MAY DISTRACT ONCOMING DRIVERS RESULTING IN SERIOUS INJURY OR DEATH.

WARNING COMPRESS THE FORK COMPLETELY AND TURN THE FORK LOCK TO LOCK TO CHECK FOR CLEARANCE BETWEEN THE LIGHTS AND ANY OTHER COMPONENT ON THE MOTORCYCLE. INSUFFICIENT CLEARANCE MAY CAUSE LOSS OF CONTROL RESULTING IN SERIOUS INJURY OR DEATH.

NOTICE It is the installer's responsibility to ensure that all of the fasteners (including pre-assembled) are tightened before operation of the motorcycle. Küryakyn will not provide warranty coverage on products or components lost due to improper installation or lack of maintenance. Periodic inspection and maintenance are required on all fasteners.

REPLACING THE LIGHT BULB

STEP 1 As shown in PIC 7, remove the Button Head Cap Screw located at the bottom of the light housing.

STEP 2 Remove the light bezel by twisting the bezel counter clockwise and pulling the bezel outward.

STEP 3 Remove the rubber inner seal from the chrome light housing. The glass light housing should now be free.

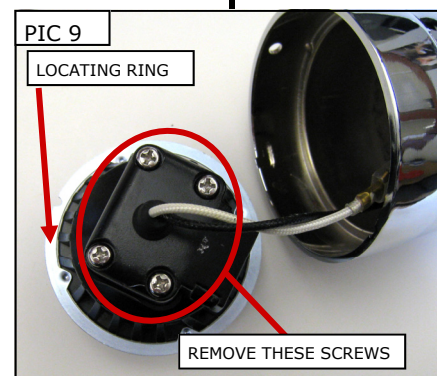
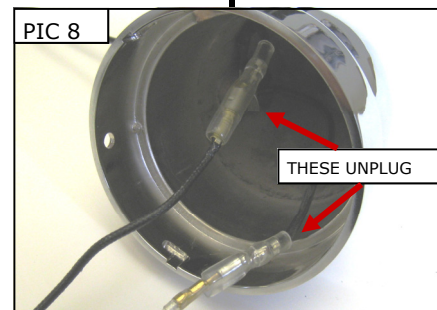
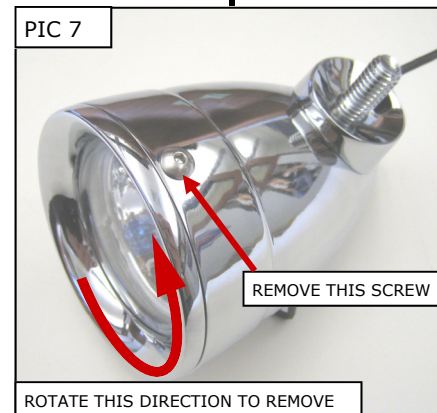
NOTE: Please note the orientation of the locating ring. This will greatly help when reassembling the lights. PIC 9.

STEP 4 Pull the glass housing out away from the chrome housing and disconnect the wires. PIC 8.

STEP 5 As shown in PIC 9, remove the 4 screws to gain access to the light bulb. Pull the light bulb from the mount with the white wire attached.

STEP 6 Take the new light and insert the white wire through the mount from the front side. (The wire should fit through the rubber boot on the backside of the mount). **Do not handle the glass portion of the new bulb with your bare hands. Oil from your fingers will stay on the bulb and create a hot spot, shortening the life of the bulb. If you do touch the bulb, clean it with an ammonia based cleaner, such as window cleaner or with alcohol before installation.**

STEP 7 Reassemble the glass housing and the chrome housing in the reverse order they were disassembled.



NOTICE

It is the installer's responsibility to ensure that all of the fasteners (including pre-assembled) are tightened before operation of the motorcycle. Küryakyn will not provide warranty coverage on products or components lost due to improper installation or lack of maintenance. Periodic inspection and maintenance are required on all fasteners.