



INSTALLATION

CONSTELLATION DRIVING LIGHTS

5009

PARTS INCLUDED

- 1 Right Driving Light with Turn Signals
- 1 Left Driving Light with Turn Signals
- 1 Installation Component Kit Including:
 - 8 Insulated Male Spades
 - 8 Female T-Taps
 - 2 1/8" x 3/8" Roll Pins
 - 8 4" Cable Ties
 - 2 Dielectric Grease Packs
- 1 Installation Instructions

Please read and understand entire instructions before starting installation.

THANK YOU FOR CHOOSING KÜRYAKYN!

IN ORDER TO PROTECT YOU AND OTHERS FROM POSSIBLE INJURY AND/OR PROPERTY DAMAGE OR LOSS, PLEASE PAY CLOSE ATTENTION TO ALL INSTRUCTIONS, WARNINGS, CAUTIONS AND NOTICES REGARDING THE USE AND CARE OF THIS PRODUCT.

WARNING

THIS INDICATION ALERTS YOU TO THE FACT THAT IGNORING THE CONTENTS DESCRIBED HEREIN CAN RESULT IN POTENTIAL DEATH OR SERIOUS INJURY.

NOTICE

This indication alerts you to the fact that ignoring the contents described herein may negatively affect product performance and functionality.

CAUTION

This indication alerts you to the fact that ignoring the contents described herein can result in potential injury.

NOTICE

IF INSTALLING THIS PRODUCT FOR ANOTHER PARTY, PLEASE MAKE SURE THEY RECEIVE THIS COPY OF THE INSTALLATION INSTRUCTIONS SO THEY ARE AWARE OF THE IMPORTANT INFORMATION CONTAINED IN THEM.

TOOLS SUGGESTED

Set of Hex Wrenches, Drill and 1/8" Drill Bit, Wire Strippers/Crimpers, Test Light, Marker, and a 1/4"-20 nut.

STRICTLY OBSERVE THE FOLLOWING GUIDELINES IN ORDER TO USE THE PRODUCT PROPERLY AND AVOID POTENTIALLY DANGEROUS ACCIDENTS.

STEP 1

Read and understand all steps in the instructions before starting the installation. Park the motorcycle on a hard, level surface and turn off the ignition.

NOTE: Universal applications. For installation with Kuryakyn Two-Piece Clamps (sold separately). Not intended for use with motorcycles that have OEM fork shrouds.

CUSTOMER SERVICE

877.370.3604 (toll free)

INSTALLATION QUESTIONS

techsupport@kuryakyn.com
or call 715.247.2983

LIMITED WARRANTY

Kuryakyn warrants that any Kuryakyn products sold hereunder, shall be free of defects in materials and workmanship for a period of one (1) year from the date of purchase by the consumer excepting the following provisions:

- Kuryakyn shall have no obligation in the event the customer is unable to provide a receipt showing the date the customer purchased the product(s).
 - The product must be properly installed, maintained and operated under normal conditions.
 - Kuryakyn makes no warranty, expressed or implied, with respect to any gold plated products.
 - Kuryakyn shall not be liable for any consequential and incidental damages, including labor and paint, resulting from failure of a Kuryakyn product, failure to deliver, delay in delivery, delivery in nonconforming condition, or for any breach of contract or duty between Kuryakyn and a customer.
- Kuryakyn products are often intended for use in specific applications. Kuryakyn makes no warranty if a Kuryakyn product is used in applications other than intended.
- Kuryakyn electrical products are warranted for one (1) year from the date of purchase by the consumer. L.E.D.'S contained in components of Kuryakyn products will be warranted for defects in materials and workmanship for 3 years from the date of purchase where as all other components shall be warranted for one(1) year. This includes, but is not limited to; control modules, wiring, chrome & other components.
- Kuryakyn makes no warranty of any kind in regard to other manufacturer's products distributed by Kuryakyn. Kuryakyn will pass on all warranties made by the manufacturer and where possible, will expedite the claim on behalf of the customer, but ultimately, responsibility for disposition of the warranty claim lies with the manufacturer.

ABOUT OUR CATALOG

For purchasing Kuryakyn® products, you can receive a complete catalog free of charge. Send the Proof-of-Purchase below with your address to: Kuryakyn, P.O. Box 339, Somerset, WI 54025. Please indicate either Accessories Catalog for Harley-Davidson® or GL & Metric Cruisers.

Be sure to ask your local dealer about other Kuryakyn® products, the motorcycle parts and accessories designed for riders by riders.

©2005 Kuryakyn USA® All Rights reserved.

-cont.-

5009-23MC-1013

kuryakyn.com



NOTE: Küryakyn recommends using one of our Driving Light and Switch/Relay Harnesses, P/N 2202 or P/N 2328 (following their included instructions) to power lights to prevent overloading a circuit on the bike. You may install the black power wires from the driving lights using the female t-tap connectors and connect them to a "keyed" power source. The lights draw approximately 6 amps. **Before connecting the power wires to a circuit check to make sure that the circuit can handle the additional load.**

WARNING

IT IS THE INSTALLERS RESPONSIBILITY TO ENSURE THAT THE INSTALLATION OF THIS ACCESSORY DOES NOT EXCEED THE MAXIMUM AMPERAGE OF THE CHOSEN CIRCUIT. EXCEEDING THE MAXIMUM ALLOWABLE AMPERAGE MAY LEAD TO CIRCUIT FAILURE WHICH COULD RESULT IN SERIOUS INJURY OR DEATH.

WARNING

A FACTORY SERVICE MANUAL WILL BE HELPFUL IN PERFORMING THIS INSTALLATION. DO NOT ATTEMPT TO PERFORM THIS INSTALLATION IF YOU ARE NOT CONFIDENT IN YOUR ABILITY TO COMPLETE ALL OF THE STEPS IN THE PROCEDURE; CONSULT A TRAINED TECHNICIAN. IMPROPER INSTALLATION COULD RESULT IN SERIOUS INJURY OR DEATH.

TEST FIT

STEP 2 Remove the 1/4"-20 screw from the light assembly. Decide whether you want the light mount in front or behind forks; position wires to exit rear. Secure the light assembly to the two-piece clamp (sold separately) with the 1/4"-20 screw. PIC 1

STEP 3 Hold the driving lights with clamp half on the motorcycle. Position your lights where you would like them.

STEP 4 Turn the handlebars lock to lock to make sure there is clearance between the lights and any component on the motorcycle.

WARNING

TURN THE FORK LOCK TO LOCK TO CHECK FOR CLEARANCE BETWEEN THE LIGHTS AND ANY OTHER COMPONENT ON THE MOTORCYCLE. INSUFFICIENT CLEARANCE MAY CAUSE LOSS OF CONTROL RESULTING IN SERIOUS INJURY OR DEATH.

STEP 5 Use a marker and make a line on the light mount as well as the clamp. PIC 2

STEP 6 Separate the clamp halves and remove the light assembly from the bike.

STEP 7 Remove the 1/4"-20 screw connecting the clamp to the light.

STEP 8 Slide the wires back through the light mount as in PIC 4 on PAGE 3.

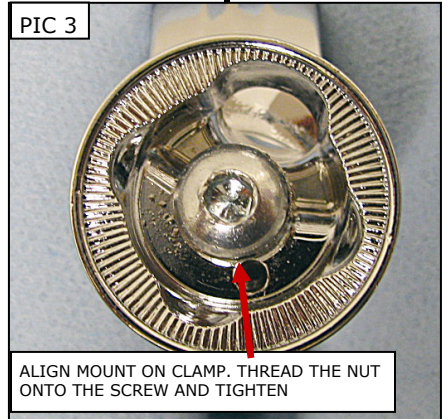
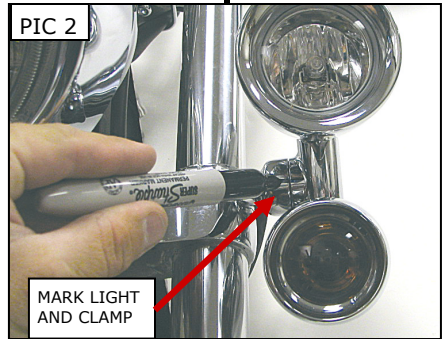
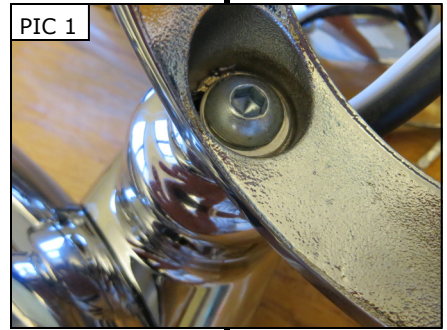
STEP 9 Place the screw through the mounting hole. PIC 3 Align the light mount and clamp. Be sure to line up the marks you made in Step 5. Install the nut (sourced separately) and tighten it; ensure the marks are aligned.

STEP 10 Use a bench vise to secure the light mount and clamp.

NOTICE

MEASURE TWICE – DRILL ONCE. Double check all reference marks made on the light and mount **BEFORE** drilling. Küryakyn will not be responsible for incidental or consequential damages resulting from this installation.

-cont.-

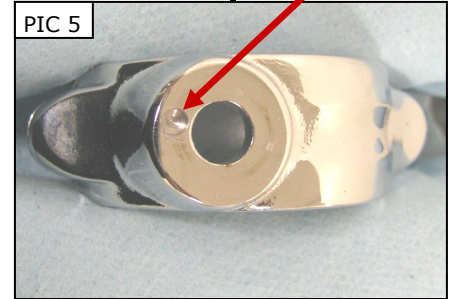
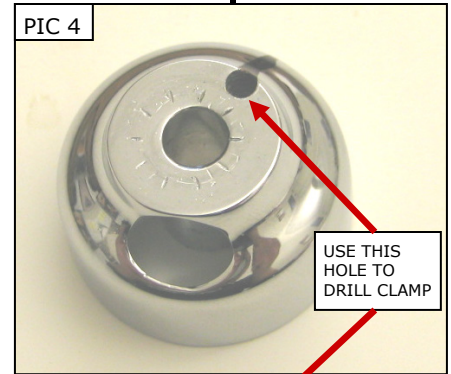


STEP 11 Use a 1/8" drill bit and insert it through the hole in the light mount and into the clamp. Drill roughly 1/8" into the clamp. Remove the mount and clamp from the vise. PIC 4 and 5

STEP 12 Remove the 1/4-20 screw and nut. Set the screw aside for now. Insert the provided roll pin into the clamp-side of the light mount. You may need to tap the roll pin in with a hammer. Connect the clamp half and light mount together ensuring the roll pin aligns with the drilled hole.

STEP 13 Reassemble the clamp and light mount with the lights. Attach the light assembly to the bike

STEP 14 Apply steps 2-13 for the opposite side. Discard the 1/4"-20 nut.



NOTICE It is the end user's responsibility to ensure that all of the fasteners (including pre-assembled) are tightened before operation of the motorcycle. Küryakyn will not provide warranty coverage on products or components lost due to improper installation or lack of maintenance. Periodic inspection and maintenance are required on all fasteners.

WIRING PROCEDURE

Wiring Color Codes for Driving Lights and Turn Signals

Color	Function
Black	Ground
Violet	"High" Turn Signal
Blue	"Low" running light
White	Driving Lights Power Wire

STEP 15 Identify the stock turn signal wiring harness; refer to your factory service manual to locate the harness.

STEP 16 Turn the key "ON" and using a test light or the wiring diagram for your bike, determine the left and right turn signal power, running light power and a ground wire. Label each of these wires for their function or write the color and function down. Turn the key "OFF" and disconnect the battery.

STEP 17 Place one of the included female T-Tap connectors over each wire and close them, ensuring that the tabs are engaged as shown in PIC 6

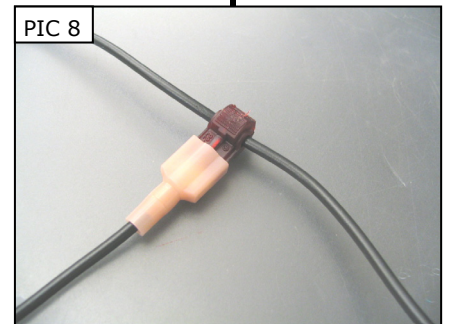
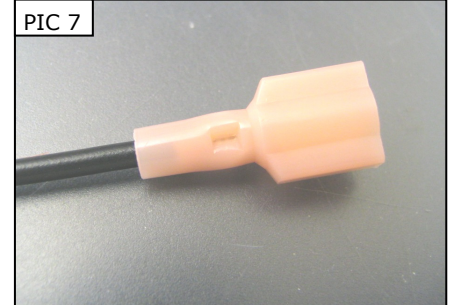
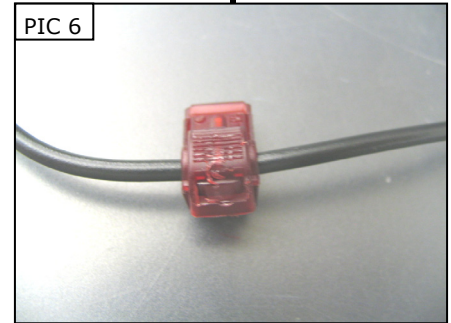
CAUTION Avoid potential electrical shock! Disconnect the battery before starting this procedure.

STEP 18 Using wire strippers remove a small amount of insulation from the ends of the wires from the new turn signals.

STEP 19 Insert each individual exposed end of the violet, blue and black wires into their own male spade and crimp the end making sure that the wire is secure. PIC 7 If you are going to use a chassis ground for the lights, do not install a male spade to the black wires.

NOTICE Küryakyn recommends the use of dielectric grease on electrical connections.

STEP 20 Place a small amount of dielectric grease on the female T-Tap connectors and insert the male spade connectors from the left side turn signal's violet wire into the female T-Tap installed on the left signal wire. Insert the male spade connectors from the right side turn signal's violet wire into the female T-Tap installed on the right signal wire. Insert the male spade connectors from both blue wires into the female T-Tap connectors installed on the running light wire(s). PIC 8



-cont.-

STEP 21 Connect the black wires from the signals to a chassis ground, or a known wiring harness ground.

STEP 22 Küryakyn recommends using one of our Driving Light Switch/Relay Harnesses, P/N 2202 or P/N 2328 (following their included instructions) to power the Driving Lights to prevent overloading a circuit on the bike. Proceed to Step 25, if using the Driving light Switch/Relay Harness.

STEP 23 If you decide to install the lights to the existing wiring on the bike, proceed as follows: Reconnect the battery. Using a test light or wiring schematic, with the key in the "ON" position, locate a "keyed" 12-volt power wire (a wire that has power with the key "ON" and loses power with the key "OFF") to power the driving lights. Once you have located a keyed 12-volt power source, turn the key to the "OFF" position and disconnect the battery.

STEP 24 Take two of the included female T-Tap connectors and place them on the desired power wire. Take the white power wires from each light and connect them to the female T-Taps on this wire. Secure all excess wiring out of harms way with the included cable ties.

NOTICE Secure all wiring from the newly installed and/or from existing parts, away from any moving parts, pinch points or extreme heat. Küryakyn WILL NOT issue a warranty on any electrical component that fails due to pinched, crimped, broken, abraded, melted or frayed wires.

STEP 25 Once all connections are connected, reconnect the battery. Reinstall the seat. Turn the key to the "ON" position and check to ensure all lights work properly.

WARNING ENSURE PROPER LIGHT OPERATION BEFORE RIDING THE MOTORCYCLE. VISIBILITY IS A MAJOR CONCERN FOR MOTORCYCLISTS. A LIGHTING MALFUNCTION COULD RESULT IN DEATH OR SERIOUS INJURY.

WARNING AFTER INSTALLING THE SEAT, PULL UP ON IT TO ENSURE IT IS LOCKED INTO PLACE. A LOOSE SEAT CAN SHIFT AND CAUSE LOSS OF CONTROL RESULTING IN SERIOUS INJURY OR DEATH.

STEP 26 If lights do not work, go over the wire connections and check all plugs to see if they are plugged-in correctly. You may also have to use a test light again check and see if the spade/T-Tap connectors are in the proper locations.

STEP 27 Secure all fasteners.

NOTICE It is the installer's responsibility to ensure that all of the fasteners (including pre-assembled) are tightened before operation of the motorcycle. Küryakyn will not provide warranty coverage on products or components lost due to improper installation or lack of maintenance. Periodic inspection and maintenance are required on all fasteners.

ADJUSTING THE DRIVING LIGHTS

WARNING IT IS THE INSTALLERS RESPONSIBILITY TO ADJUST THE NEW DRIVING LIGHTS TO THE PATTERN RECOMMENDED IN THE SERVICE MANUAL FOR THE HEADLIGHT LOW BEAM. FAILURE TO PROPERLY ADJUST THE LIGHT PATTERN MAY DISTRACT ONCOMING DRIVERS RESULTING IN SERIOUS INJURY OR DEATH.

STEP 1 For up and down adjustment, loosen the 1/4"-20 screw that secures the light assembly to the mount and tilt the assembly in the desired direction. When the light is in the desired position, tighten the screw securely.

-cont.-

STEP 2

For side to side adjustment, remove the glass light housing as outlined below, loosen the fastener inside the light housing. Rotate the housing to the desired position and retighten the fastener. Reinstall the light

Küryakyn

NOTICE

It is the installer's responsibility to ensure that all of the fasteners (including pre-assembled) are tightened before operation of the motorcycle. Küryakyn will not provide warranty coverage on products or components lost due to improper installation or lack of maintenance. Periodic inspection and maintenance are required on all fasteners.

REPLACING THE LIGHT BULB

STEP 1 As shown in PIC 9, remove the Button Head Cap Screw located at the bottom of the light housing.

STEP 2 Remove the light bezel by twisting the bezel counter clockwise and pulling the bezel outward.

STEP 3 Remove the rubber inner seal from the chrome light housing. The glass light housing should now be free.

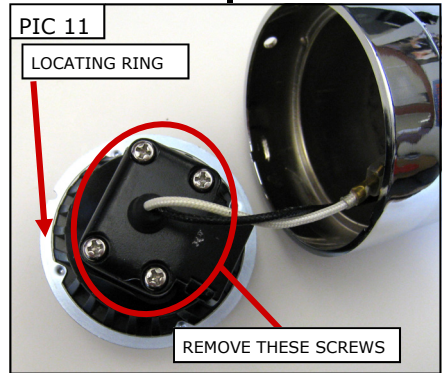
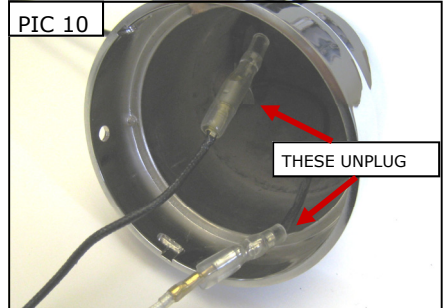
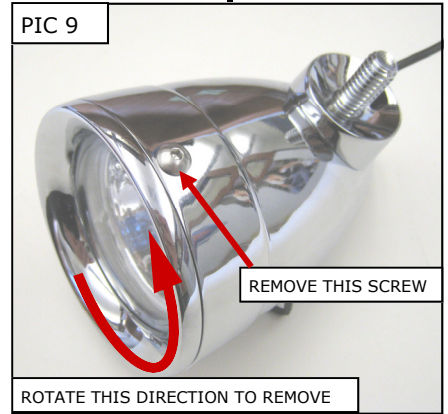
NOTE: Please note the orientation of the locating ring. This will greatly help when reassembling the lights. PIC 11.

STEP 4 Pull the glass housing out away from the chrome housing and disconnect the wires. PIC 10.

STEP 5 As shown in PIC 11, remove the 4 screws to gain access to the light bulb. Pull the light bulb from the mount with the white wire attached.

STEP 6 Take the new light and insert the white wire through the mount from the front side. (The wire should fit through the rubber boot on the backside of the mount). **Do not handle the glass portion of the new bulb with your bare hands. Oil from your fingers will stay on the bulb and create a hot spot, shortening the life of the bulb. If you do touch the bulb, clean it with an ammonia based cleaner, such as window cleaner or with alcohol before installation.**

STEP 7 Reassemble the glass housing and the chrome housing in the reverse order they were disassembled.



NOTICE

It is the installer's responsibility to ensure that all of the fasteners (including pre-assembled) are tightened before operation of the motorcycle. Küryakyn will not provide warranty coverage on products or components lost due to improper installation or lack of maintenance. Periodic inspection and maintenance are required on all fasteners.