



INSTALLATION

DRIVING LIGHTS FOR ROAD GLIDE

5007

PARTS INCLUDED

- 1 Right Light Assembly
- 1 Left Light Assembly
- 1 Right Mounting Bracket
- 1 Left Mounting Bracket
- 1 12-Pin Wiring Adapter
- 1 Hardware Kit Including:
 - 2 Narrow Flat Washers
 - 2 1/4"-20 x 1" Hex Bolts
 - 2 Driving Light Spacers
- 1 All-Purpose Lighting Installation Kit Including:
 - 1 Dielectric Grease Pack
 - 6 Female T-Taps
 - 6 Insulated Male Spade Connectors
 - 2 3-Terminal AMP Connectors—Black
 - 2 Large 4-Pin AMP Connector—Black—**NOT USED**
 - 2 AMP 6-Circuit Plugs—**NOT USED**
 - 1 24" "Y" Wire Assembly—White
 - 12 6" Cable Ties
- 1 Installation Instructions

Please read and understand entire instructions before starting installation.

THANK YOU FOR CHOOSING KÜRYAKYN!

IN ORDER TO PROTECT YOU AND OTHERS FROM POSSIBLE INJURY AND/OR PROPERTY DAMAGE OR LOSS, PLEASE PAY CLOSE ATTENTION TO ALL INSTRUCTIONS, WARNINGS, CAUTIONS AND NOTICES REGARDING THE USE AND CARE OF THIS PRODUCT.

WARNING

THIS INDICATION ALERTS YOU TO THE FACT THAT IGNORING THE CONTENTS DESCRIBED HEREIN CAN RESULT IN POTENTIAL DEATH OR SERIOUS INJURY.

NOTICE

This indication alerts you to the fact that ignoring the contents described herein may negatively affect product performance and functionality.

CAUTION

This indication alerts you to the fact that ignoring the contents described herein can result in potential injury.

NOTICE

IF INSTALLING THIS PRODUCT FOR ANOTHER PARTY, PLEASE MAKE SURE THEY RECEIVE THIS COPY OF THE INSTALLATION INSTRUCTIONS SO THEY ARE AWARE OF THE IMPORTANT INFORMATION CONTAINED IN THEM.

TOOLS SUGGESTED

Set of Hex Wrenches, Torx Drivers, Combination Wrenches, Socket Set and Ratchet

STRICTLY OBSERVE THE FOLLOWING GUIDELINES IN ORDER TO USE THE PRODUCT PROPERLY AND AVOID POTENTIALLY DANGEROUS ACCIDENTS.

STEP 1

Read and understand all steps in the instructions before starting the installation. Park the motorcycle on a hard, level surface and turn off the ignition. Let cool.

CUSTOMER SERVICE

877.370.3604 (toll free)

INSTALLATION QUESTIONS

techsupport@kuryakyn.com
or call 715.247.2983

LIMITED WARRANTY

Kuryakyn warrants that any Kuryakyn products sold hereunder, shall be free of defects in materials and workmanship for a period of one (1) year from the date of purchase by the consumer excepting the following provisions:

- Kuryakyn shall have no obligation in the event the customer is unable to provide a receipt showing the date the customer purchased the product(s).
 - The product must be properly installed, maintained and operated under normal conditions.
- Kuryakyn makes no warranty, expressed or implied, with respect to any gold plated products.
 - Kuryakyn shall not be liable for any consequential and incidental damages, including labor and paint, resulting from failure of a Kuryakyn product, failure to deliver, delay in delivery, delivery in nonconforming condition, or for any breach of contract or duty between Kuryakyn and a customer.

• Kuryakyn products are often intended for use in specific applications. Kuryakyn makes no warranty if a Kuryakyn product is used in applications other than intended.

• Kuryakyn electrical products are warranted for one (1) year from the date of purchase by the consumer. L.E.D.'S contained in components of Kuryakyn products will be warranted for defects in materials and workmanship for 3 years from the date of purchase where as all other components shall be warranted for one(1) year. This includes, but is not limited to; control modules, wiring, chrome & other components.

• Kuryakyn makes no warranty of any kind in regard to other manufacturer's products distributed by Kuryakyn. Kuryakyn will pass on all warranties made by the manufacturer and where possible, will expedite the claim on behalf of the customer, but ultimately, responsibility for disposition of the warranty claim lies with the manufacturer.

ABOUT OUR CATALOG

For purchasing Kuryakyn® products, you can receive a complete catalog free of charge.

Send the Proof-of-Purchase below with your address to: Kuryakyn, P.O. Box 339, Somerset, WI 54025.

Please indicate either Accessories Catalog for Harley-Davidson® or GL & Metric Cruisers.

Be sure to ask your local dealer about other Kuryakyn® products, the motorcycle parts and accessories designed for riders.

©2005 Kuryakyn USA® All Rights reserved.



kuryakyn.com

NOTE: This kit includes a 12-Pin Wiring Adapter that places control of the driving lights on the motorcycle's Accessory switch. If you already have accessories wired to this switch, you will have to choose an alternative wiring method (sold separately). Alternatives include replacing the stock Accessory switch with a Kuryakyn Double Rocker Switch, P/N 2201, or adding a Kuryakyn Universal Driving Light Wiring Relay Kit, P/N's 2202 or 2328. If you have an empty switch location on the dash, you could purchase an OEM switch from an authorized H-D dealership.

WARNING IT IS THE INSTALLERS RESPONSIBILITY TO ENSURE THAT THE INSTALLATION OF THIS ACCESSORY DOES NOT EXCEED THE MAXIMUM AMPERAGE OF THE CHOSEN CIRCUIT. EXCEEDING THE MAXIMUM ALLOWABLE AMPERAGE MAY LEAD TO CIRCUIT FAILURE WHICH COULD RESULT IN SERIOUS INJURY OR DEATH.

WARNING A FACTORY SERVICE MANUAL WILL BE HELPFUL IN PERFORMING THIS INSTALLATION. THERE ARE SPECIFIC PROCEDURES OUTLINED IN THE SERVICE MANUAL THAT NEED TO BE FOLLOWED TO COMPLETE THIS INSTALLATION. DO NOT ATTEMPT TO PERFORM THIS INSTALLATION WITHOUT A SERVICE MANUAL OR IF YOU ARE NOT CONFIDENT IN YOUR ABILITY TO COMPLETE ALL OF THE STEPS IN THE PROCEDURE; CONSULT A TRAINED TECHNICIAN. IMPROPER INSTALLATION COULD RESULT IN SERIOUS INJURY OR DEATH.

CAUTION Avoid potential electrical shock! Disconnect the battery before starting this procedure.

STEP 2 Remove the outer fairing as described in the service manual. Disconnect the battery.

NOTICE Avoid damage to the motorcycle. Protect painted surfaces with a soft cloth or blanket.

NOTICE Assistance is recommended to secure the outer fairing after all of the torx screws have been removed to prevent damage.

STEP 3 Locate and separate the OEM right turn signal connector. The connector is located inside the fairing usually towards the bottom of the fairing; there will be one violet wire, one blue wire, and one black wire coming out of the connectors. Remove the right turn signal and bracket.

STEP 4 Install the right light assembly on the right mounting bracket (refer to PIC 1 to determine the right bracket), routing the wires through the hole in the bracket.

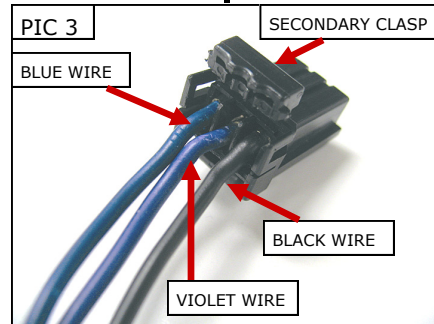
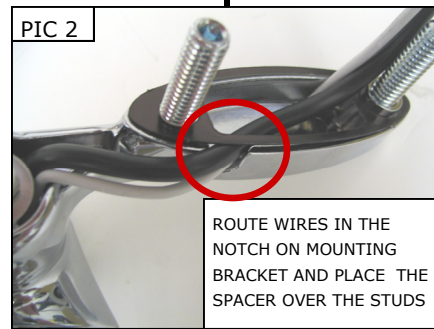
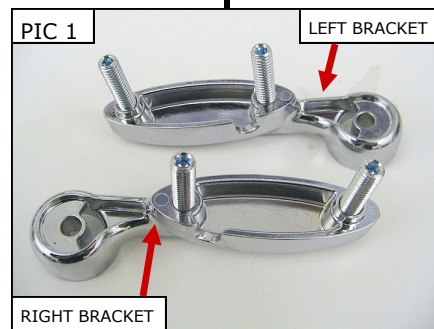
STEP 5 Secure the light assembly to the bracket with a 1/4"-20 x 1" hex bolt and narrow flat washer.

STEP 6 Route the wires through the notch in the mounting bracket and place a driving light spacer over the studs, routing the wires through the center hole of the spacer as shown in PIC 2.

STEP 7 Locate one of the 3-circuit AMP connectors from the hardware kit, open the secondary clasp and insert the blue, violet and black wires into the terminal until they click (refer to PIC 3 for each wire location in the plug). The terminal sockets will only fit in the plug correctly one way. You should feel a click, then pulling back gently on the wire, it should feel locked in the plug. Close the secondary clasp once all the wires have been inserted.

NOTICE Kuryakyn recommends the use of dielectric grease on electrical connections.

-cont.-



- STEP 8** Repeat STEP 3 through STEP 7 for the left side.
- STEP 9** Remove the gauge shroud as described in the service manual. PIC 4
- STEP 10** Locate and disconnect the 12-Pin AMP connector in the dash housing. PIC 5
- STEP 11** Locate the 12-pin wiring adapter from the wiring kit. Apply some of the included dielectric grease to each 12-Pin connector and plug it into the OEM AMP connectors. PIC 6
- STEP 12** Route the power wire for the driving lights out under the bottom of the dash, along the OEM harness beside the neck, to the front of the inner fairing. PIC 7
- STEP 13** Apply some dielectric grease to the insulated female spade on the power wire and connect it to the supplied white "Y" wire. Route the white wires from each driving light to the up to the "Y" wire that was just connected. Apply some dielectric grease to each connector on the white "Y" wire and connect one end to the white wire from each driving light. Secure any excess wiring out of harms way with the included cable ties.
- STEP 14** Place a small amount of dielectric grease on the plug and insert it in the right turn signal connector where the OEM signal was removed from in STEP 3. Make sure that the driving lights are supported when these connections are made so the wires and the driving lights are not damaged.

NOTICE Secure all wiring from the newly installed and/or from existing parts, away from any moving parts, pinch points or extreme heat. Küryakyn WILL NOT issue a warranty on any electrical component that fails due to pinched, crimped, broken, abraded, melted or frayed wires.

- STEP 15** Reconnect the battery and test that all lights work correctly.
- STEP 16** Reinstall the gauge shroud as described in the service manual.

WARNING ENSURE PROPER LIGHT OPERATION BEFORE RIDING THE MOTORCYCLE. VISIBILITY IS A MAJOR CONCERN FOR MOTORCYCLISTS. A LIGHTING MALFUNCTION COULD RESULT IN DEATH OR SERIOUS INJURY.

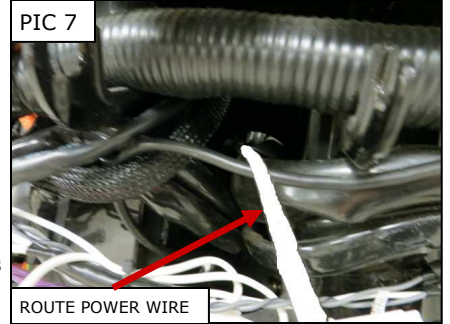
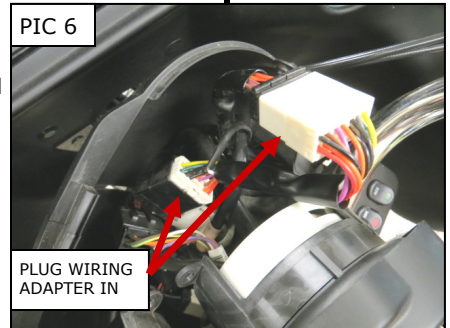
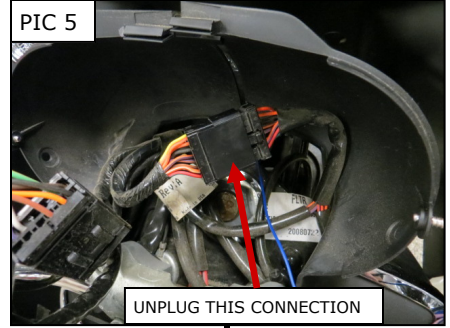
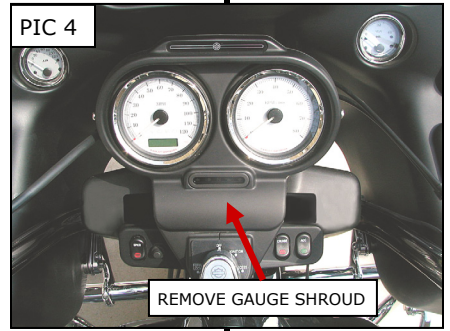
- STEP 17** Reinstall the outer fairing as described in the service manual.

NOTICE It is the installer's responsibility to ensure that all of the fasteners (including pre-assembled) are tightened before operation of the motorcycle. Küryakyn will not provide warranty coverage on products or components lost due to improper installation or lack of maintenance. Periodic inspection and maintenance are required on all fasteners.

ADJUSTING THE DRIVING LIGHTS

WARNING WARNING! IT IS THE INSTALLERS RESPONSIBILITY TO ADJUST THE NEW DRIVING LIGHTS TO THE PATTERN RECOMMENDED IN THE SERVICE MANUAL FOR THE LOW BEAM OF THE HEADLIGHTS. FAILURE TO PROPERLY ADJUST THE LIGHT PATTERN MAY DISTRACT ONCOMING DRIVERS RESULTING IN SERIOUS INJURY OR DEATH.

-cont.-



STEP 1 For up and down adjustment, loosen the 1/4"-20 fastener that secures the light assembly to the mount and tilt the assembly in the desired direction. When the light is in the desired position, tighten the 1/4"-20 fastener securely. PIC 8

STEP 2 For side to side adjustment, follow the light removal procedure, Steps 1 and 2, below. After removal of the light, loosen the hex fastener (PIC 9), move the housing to the desired position and retighten the hex fastener securely. Reassemble the light in the reverse order.

NOTICE It is the installer's responsibility to ensure that all of the fasteners (including pre-assembled) are tightened before operation of the motorcycle. Küryakyn will not provide warranty coverage on products or components lost due to improper installation or lack of maintenance. Periodic inspection and maintenance are required on all fasteners.

REPLACING THE LIGHT BULB

STEP 1 Remove the Button Head Cap Screw located at the bottom of the light housing. PIC 10 Remove the light bezel by twisting the bezel counter clockwise and pulling the bezel outward. Remove the rubber inner seal from the chrome light housing. The glass light housing should now be free.

NOTE: Please note the orientation of the locating ring. This will greatly help when reassembling the lights. PIC 10.

STEP 2 Pull the glass housing out and disconnect the wires PIC 11.

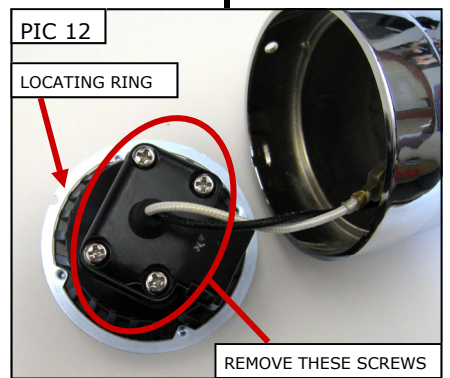
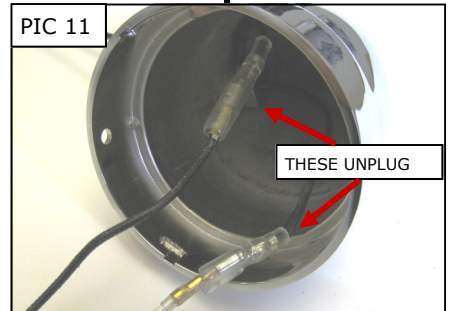
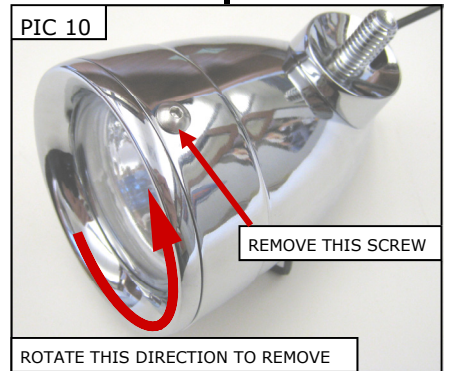
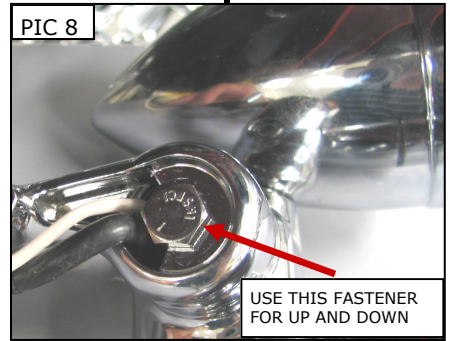
STEP 3 As shown in PIC 12, remove the 4 screws to gain access to the light bulb.

STEP 4 Pull the light bulb from the mount with the white wire attached.

STEP 5 Take the new light and insert the white wire through the mount from the front side. (The wire should fit through the rubber boot on the backside of the mount). **Do not handle the glass portion of the new bulb with your bare hands. Oil from your fingers will stay on the bulb and create a hot spot, shortening the life of the bulb. If you do touch the bulb, clean it with an ammonia based cleaner, such as window cleaner or with alcohol before installation.**

STEP 6 Reassemble the glass housing and the chrome housing in the reverse order.

NOTICE It is the installer's responsibility to ensure that all of the fasteners (including pre-assembled) are tightened before operation of the motorcycle. Küryakyn will not provide warranty coverage on products or components lost due to improper installation or lack of maintenance. Periodic inspection and maintenance are required on all fasteners.



Ride On!