



## DRIVING LIGHTS for FLHT/FLHX/FLHR

### 5005

**THANK YOU FOR CHOOSING KÜRYAKYN!**

**PROTECT YOURSELF AND OTHERS FROM POSSIBLE INJURY AND PROPERTY DAMAGE OR LOSS. PAY CLOSE ATTENTION TO ALL INSTRUCTIONS, WARNINGS, CAUTIONS, AND NOTICES REGARDING THE INSTALLATION, USE, AND CARE OF THIS PRODUCT.**

### WARNING

**THIS INDICATION ALERTS YOU TO THE FACT THAT IGNORING THE CONTENTS DESCRIBED HEREIN CAN RESULT IN POTENTIAL DEATH OR SERIOUS INJURY.**

### NOTICE

**This indication alerts you to the fact that ignoring the contents described herein may negatively affect product performance and functionality or damage the product itself or the product to which it is being attached.**

### MAKE SURE THE FOLLOWING PARTS HAVE BEEN INCLUDED IN THE KIT:

- 1 Right Driving Light Assembly
- 1 Left Driving Light Assembly
- 1 Right Driving Light Bracket
- 1 Left Driving Light Bracket
- 4 Driving Light Bracket Plugs
- 1 12-Pin Wiring Adapter
- 1 Hardware Kit including:
  - 4 5/16"-18 Jam Nuts
  - 4 5/16" Flat Washers
  - 2 1/4"-20 x 3/4" Socket Head Cap Screws
  - 2 1/4" Narrow Flat Washers
  - 4 Driving Light Spacers
  - 4 5/16"-18 x 1" Button Socket Cap Screws
  - 4 5/16"-24 x 1" Button Socket Cap Screws — **NOT USED**
- 1 All Purpose Lighting Installation Kit including:
  - 1 Dielectric Grease Pack
  - 6 Female T-Tap Connectors
  - 6 Male Spade Connectors
  - 2 3-Pin Connectors — Black — **NOT USED**
  - 2 4-Pin Connectors — Black
  - 2 6-Pin Connectors — White
  - 1 24" Power "Y" Wire Assembly (White)
  - 12 6" Cable Ties
- 1 Installation Instructions

### YOU WILL ALSO NEED:

Set of Hex Wrenches, Set of Torx Wrenches, Screwdrivers, Small Pick, Vise Grips, Set of Combination Wrenches, Socket Set and Ratchet, Wire Stripper, Test Light or Multi-meter

### NOTICE

**These installation instructions contain important information. Ensure that the end user receives this copy and is aware of its importance for future reference.**

### STEP 1

Read and understand all steps in the instructions before starting the installation. Park the motorcycle on a hard, level surface and turn **IGN OFF**. Put the bike on its center stand (if equipped) or secure it in a motorcycle wheel chock. Remove the main fuse.

### NOTICE

**Avoid damage to the motorcycle. Protect painted surfaces with a soft cloth or blanket.**

### CUSTOMER SERVICE

877.370.3604 (toll free)

### INSTALLATION QUESTIONS

techsupport@kuryakyn.com  
or call 715.247.2983

### LIMITED WARRANTY

Küryakyn warrants that any Küryakyn products sold hereunder, shall be free of defects in materials and workmanship for a period of one (1) year from the date of purchase by the consumer excepting the following provisions:

- Küryakyn shall have no obligation in the event the customer is unable to provide a receipt showing the date the customer purchased the product(s).
  - The product must be properly installed, maintained and operated under normal conditions.
- Küryakyn makes no warranty, expressed or implied, with respect to any gold plated products.
  - Küryakyn shall not be liable for any consequential and incidental damages, including labor and paint, resulting from failure of a Küryakyn product, failure to deliver, delay in delivery, delivery in nonconforming condition, or for any breach of contract or duty between Küryakyn and a customer.
- Küryakyn products are often intended for use in specific applications. Küryakyn makes no warranty if a Küryakyn product is used in applications other than intended.
- Küryakyn electrical products are warranted for one (1) year from the date of purchase by the consumer. L.E.D.'S contained in components of Küryakyn products will be warranted for defects in materials and workmanship for 3 years from the date of purchase where as all other components shall be warranted for one(1) year. This includes, but is not limited to; control modules, wiring, chrome & other components.
- Küryakyn makes no warranty of any kind in regard to other manufacturer's products distributed by Küryakyn. Küryakyn will pass on all warranties made by the manufacturer and where possible, will expedite the claim on behalf of the customer, but ultimately, responsibility for disposition of the warranty claim lies with the manufacturer.

### ABOUT OUR CATALOG

For purchasing Küryakyn® products, you can receive a complete catalog free of charge. Send the Proof-of-Purchase below with your address to: Küryakyn  
454 County Road V V  
Somerset, WI 54025-9031  
Please indicate either Accessories Catalog for Harley-Davidson® or GL & Metric Cruisers.

Be sure to ask your local dealer about other Küryakyn® products, the motorcycle parts and accessories designed for riders by riders.

**WARNING**

THE END USER'S SAFETY DEPENDS UPON PROPER INSTALLATION OF THIS PRODUCT. IF A STEP IN THESE INSTRUCTIONS IS NOT WITHIN YOUR CAPABILITIES OR YOU DO NOT HAVE THE CORRECT TOOLS, HAVE YOUR DEALER PERFORM THE PROCEDURE. IMPROPER INSTALLATION OF THIS PRODUCT COULD RESULT IN DEATH OR SERIOUS INJURY.



ACCIDENTAL VEHICLE START-UP COULD CAUSE DEATH OR SERIOUS INJURY, REMOVE THE MAIN FUSE BEFORE PROCEEDING.

**DRIVING LIGHT ASSEMBLY:**

- STEP 2** Prepare a soft, sturdy work surface within arm's reach of the motorcycle.
- STEP 3** Refer to **PIC 1**. Locate the Left (clutch-side) and Right (brake-side) Driving Light Brackets and Driving Light Assemblies in the kit.
- STEP 4** Refer to **PIC 2**. Route the wiring from the Light Assemblies downward through the curved slots in the Brackets.
- STEP 5** Refer to **PIC 3**. Secure the Light Assembly to the Brackets with the included 1/4"-20 x 3/4" Socket Head Cap Screws and 1/4" Narrow Flat Washers; leave the screws snug to allow for adjustment later.
- STEP 6** Route the wires down into the channel in the Light Bar as shown in **PIC 4**.

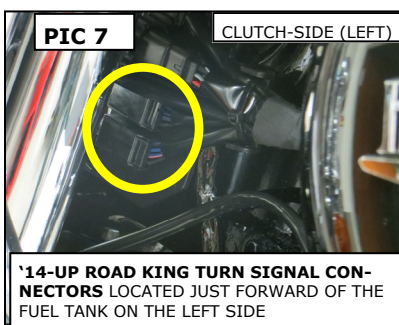
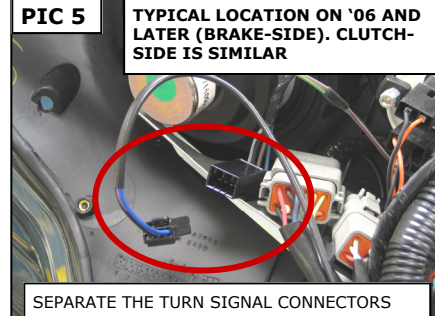
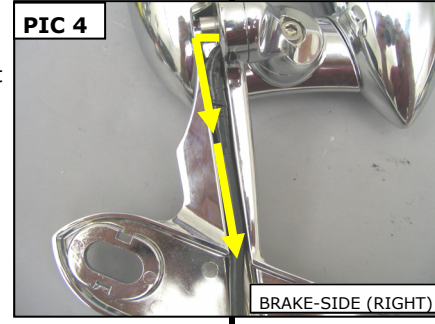
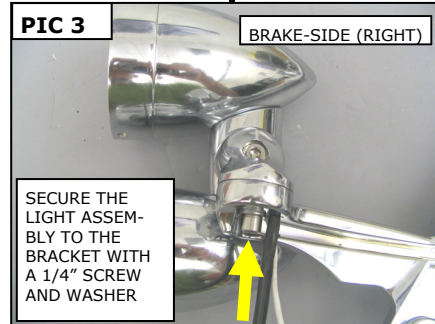
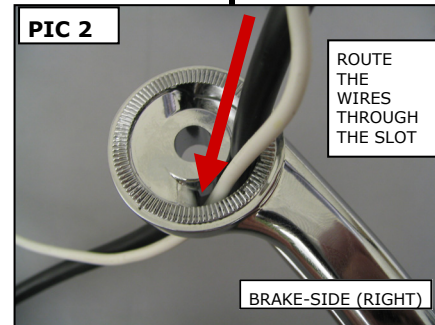
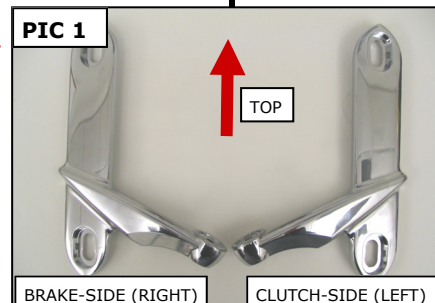
**BIKE PREP:**

- STEP 7** Follow the steps outlined in the model-specific service manual to remove the outer fairing or headlight.
- STEP 8** Separate the existing turn signal connectors:
  - '06—Later Electra Glide and Street Glide refer to **PIC 5** two (2) black 4-pin connectors with three wires each.
  - '05—Earlier Electra Glide and Street Glide and '97-'13 FLHR refer to **PIC 6** one (1) black 6-pin connector with six wires.

The connector is typically found on the clutch-side (left) of Electra Glide and Street Glide inner fairings and inside the headlight bucket on Road Kings.

  - '14—Later FLHR refer to **PIC 7** — one (1) black 4-pin connector with four wires AND one (1) black 6-pin connector with four wires; they are located just forward of the fuel tank on the clutch-side (left).
- STEP 9** **Road King models (Except '14—later FLHR)** Separate the existing 2-Pin passing-lamp connectors (white connector with two grey wires).

Remove the existing light bar assembly from the motorcycle (note the existing wire-routing for later); set the assembly aside, it will not be reused.



**INSTALL**

-cont.-

**DRIVING**

**LIGHTS:**

**STEP 10** Attach the Driving Light Assemblies to the motorcycle with the included fasteners:

**FLHT and FLHX (Batwing fairing) models** — use the included 5/16"-18 X 1" Button Socket Cap Screws and 5/16" Flat Washers;

**Road King models** — use the included 5/16"-18 Jam Nuts and 5/16" Flat Washers; if the threaded studs protrude out of the Mounting Bracket, install the included Spacers between the Bracket and forks.

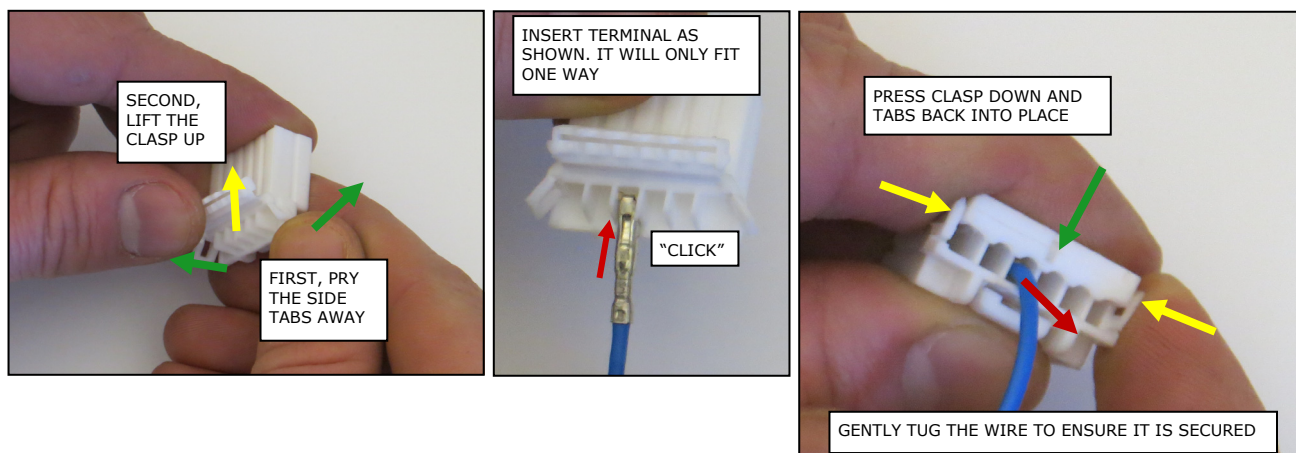
Adjust the Brackets so the fasteners are centered in the holes, then snug them for now.

**STEP 11** Ensure that the Driving Light wiring is routed along the pre-existing path without getting pinched or kinked.

**NOTICE**

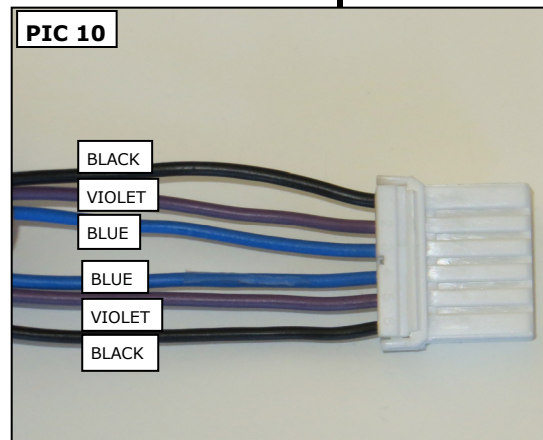
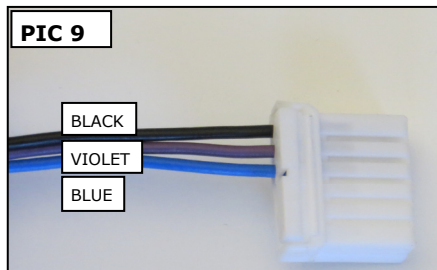
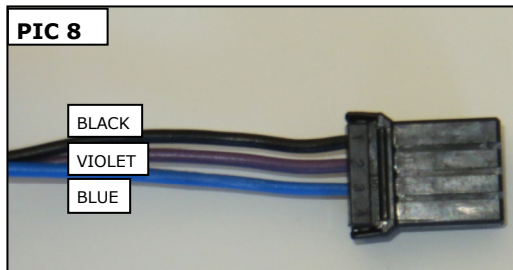
**Secure the wiring away from moving parts, pinch points, or extreme heat. Kuryakyn will not provide warranty coverage on any electrical component that fails due to pinched, crimped, broken, abraded, melted, or frayed wires.**

**FOLLOW THE GUIDELINES BELOW TO PREPARE THE INCLUDED CONNECTORS.**



THE FOLLOWING GUIDELINES ARE MODEL- AND YEAR-SPECIFIC PROCEDURES.

DETERMINE THE CORRECT PROCEDURE BEFORE ASSEMBLING ANY OF THE INCLUDED ELECTRICAL CONNECTORS.



'06—Later Electra Glide and Street Glide — requires two (2) of the 4-Pin 3 wire connectors. Refer to **PIC 8**.

'05—Earlier Electra Glide and Street Glide and '97—'13 FLHR — require one (1) 6-Pin 6 wire connector. Refer to **PIC 10**.

'14—Later FLHR — requires one (1) 4-Pin 3 wire connector for the clutch-side (left) and one (1) 6-Pin 3 wire connector for the brake-side (right). Refer to **PICs 8 and 9**.

-cont.-

**STEP 12** Prepare the model-and year-specific connectors by following the guidelines on **PAGE 3**.

**NOTICE**

**Dielectric grease inhibits moisture and prevents corrosion. Kuryakyn recommends the use of the included dielectric grease on ALL electrical connections. Apply dielectric grease directly to mating surfaces.**

**STEP 13** Connect the Driving Light Connectors to those on the motorcycle.

**STEP 14** **All models (Except 1997 models and '14—Later Road King)** Locate the included 12-Pin Wiring Adapter in the kit;

Locate and separate the existing 12-Pin connector on the motorcycle wiring harness; it is typically located on the brake-side (right) fairing-support-bracket below the radio;

apply some of the included Dielectric Grease to the open ends of the connectors and connect the Adapter inline.

**STEP 15** Locate the included 24" Power "Y" Wire Assembly (White) in the kit; connect it to the Adapter.

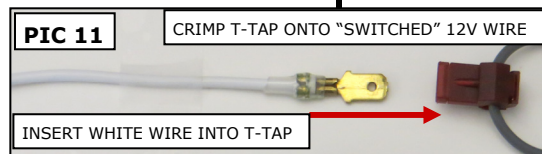
Connect the "Y" ends to the Driving Light white wires (male spade connectors).

Reinstall the main fuse, turn **IGN ON**, flip the existing driving-light switch **ON** and ensure proper function of both the turn signals and Driving Lights. **SKIP TO STEP 17.**

**STEP 16** **All 1997 models and '14—Later Road King** Reinstall the main fuse. Use a test light or multi-meter to confirm a "switched" 12V (15A) source in the existing wiring harness.

**NOTE:** '14—Later Road King models: Typically the **GREY wire in the existing connector is "switched" 12V.**

With the power off, crimp both of the included Female T-Taps onto the "switched" 12V wire(s). See **PIC 11.**



Apply some of the included Dielectric Grease to the open ends of the connectors; connect both the white wires to the T-Taps on the "switched" 12V wire. See **PIC 11.**

**NOTICE**

**Secure the wiring away from moving parts, pinch points, or extreme heat. Kuryakyn will not provide warranty coverage on any electrical component that fails due to pinched, crimped, broken, abraded, melted, or frayed wires.**

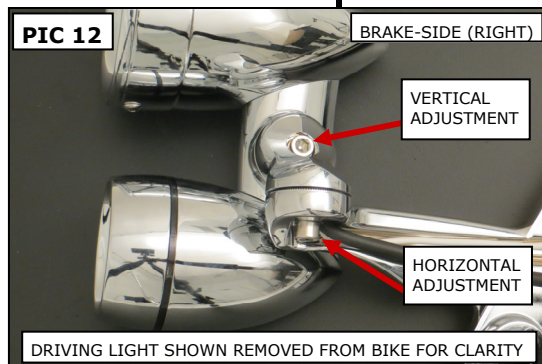
**STEP 17** Secure the wiring away from hazards with the included Cable Ties.

**STEP 18** Ensuring that the screw heads remain centered in the holes, tighten the Bracket fasteners;

snap the four (4) included Driving Light Bracket Plugs into place over the screw heads.

**STEP 19** Refer to **PIC 12. VERTICAL ADJUSTMENT:** loosen the screw on the inner side of the knuckle, adjust the light, then tighten the screw

**STEP 20** Refer to **PIC 12. HORIZONTAL ADJUSTMENT:** loosen the screw on the underside of the mounting bracket, adjust the light, then tighten the screw



**WARNING**

**IT IS THE END USER'S RESPONSIBILITY TO ENSURE THAT THE DRIVING LIGHTS HAVE BEEN ADJUSTED IN A WAY THAT DOES NOT DISTRACT ONCOMING DRIVERS. DISTRACTED DRIVING CAN RESULT IN LOSS OF CONTROL LEADING TO SERIOUS INJURY OR DEATH**

-cont.-

**STEP 21** Reinstall the outer fairing or headlight according to the service manual.

**STEP 22** Ensure that the installation of the Driving Lights does not interfere with the proper operation of the motorcycle **BEFORE** riding.

**BULB REPLACEMENT:**

**Do not handle the new bulb with bare hands. Oil from your fingers will remain on the bulb and create a hot spot when lit, shortening the life of the bulb. Remove all oil and debris with an ammonia based cleaner or alcohol before completing reassembly.**

Refer to **PIC 13**. Remove the screw on the underside of the lamp housing; set it aside for now.

Refer to **PIC 13**. Rotate the light bezel counterclockwise then pull it straight out; set it aside for now.

Refer to **PIC 14**. Note the orientation of the notch in the rubber seal as it is removed from inside the light housing.

Refer to **PIC 15**. Remove the bulb, note the notch in the locating ring, and separate the two wire connectors.

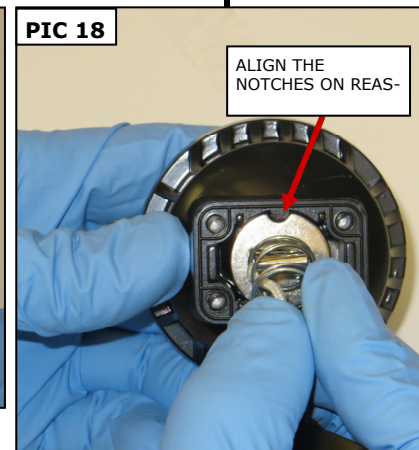
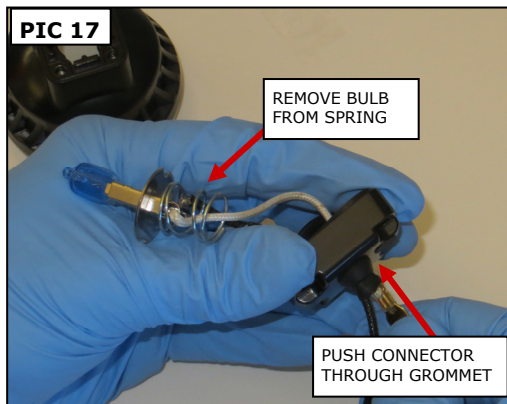
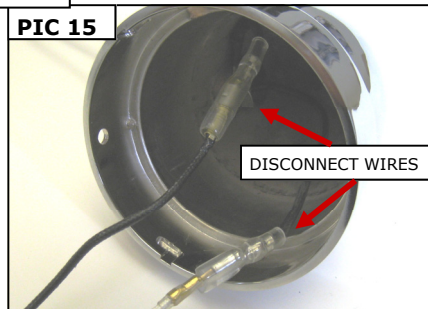
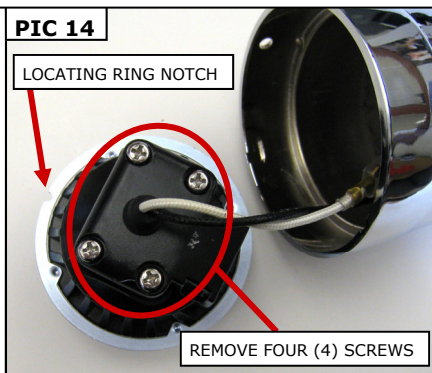
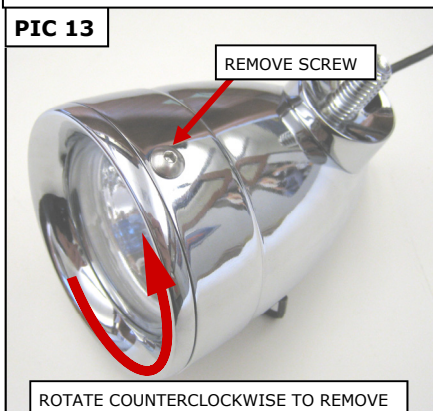
Refer to **PIC 14 and 15**. Remove the four (4) screws from the backside of the bulb assembly; set them aside for now.

Refer to **PIC 16**. Separate the rear cover from the bulb housing; note the rubber gasket.

Refer to **PIC 17**. Push the connector on the white wire through the grommet; separate the spring from the bulb assembly; remove and discard the bulb with the white wire.

Reassembly is the reverse of disassembly; align the notches in the new bulb with the boss on the bulb housing.

HOUSING SHOWN REMOVED FROM BIKE FOR CLARITY. IT IS NOT NECESSARY TO REMOVE TO CHANGE BULB.



**NOTICE**

It is the end user's responsibility to ensure that all of the fasteners (including pre-assembled) are tightened before operation of the motorcycle. Kuryakyn will not provide warranty coverage on products or components lost or damaged due to improper installation or lack of maintenance. Periodic inspection and maintenance are required on all fasteners.

*Ride On!*