



LAYDOWN TAILLIGHT LENS

4767

FITS: LATE '03-UP DRESSERS, ROAD KINGS, ROAD GLIDE, STREET GLIDE (EX. '07 FLHRSE); LATE '03-UP DYNAS, LATE '03-UP SPORTSTERS AND LATE '03-UP SOFTTAILS (EX. DEUCE, DELUXE, HERITAGE SPRINGER, SPRINGER CLASSIC)

PARTS INCLUDED

- 1 Smoke Laydown Taillight Lens
- 1 Reflector
- 1 Iridium Coated Red Bulb
- 1 Bulb Socket with Connector
- 1 Gasket
- 1 Installation Instructions

Please read and understand entire instructions before starting installation.

THANK YOU FOR CHOOSING KÜRYAKYN!

ATTENTION! It is the installer's responsibility to ensure all fasteners (including pre-assembled) are tightened before operation of the motorcycle. Kuryakyn will not warranty components lost due to improper installation. Periodic maintenance may be required.

NOTE Installation is shown on a 2005 Heritage Softail; while representative of typical procedure, there may be minor differences when installed on other models.

TOOLS SUGGESTED

Phillips head screwdriver

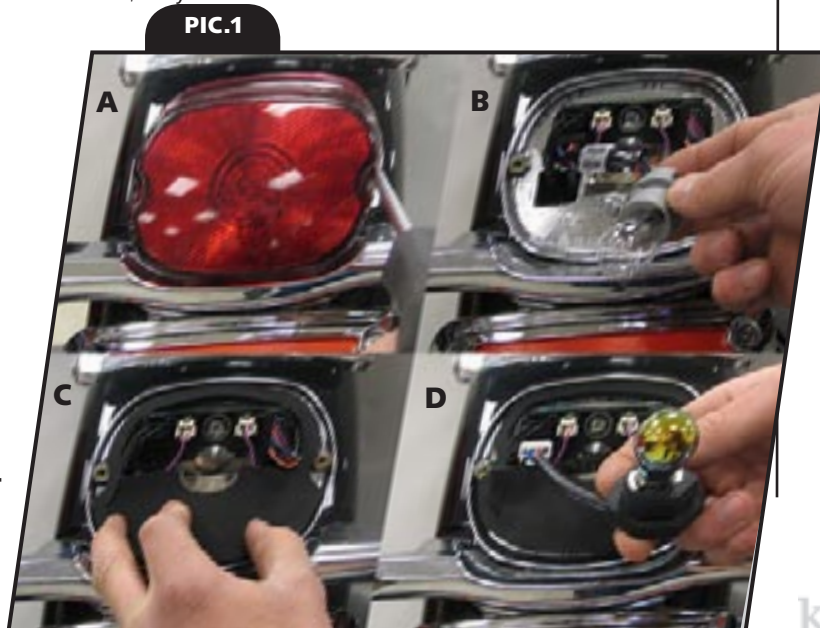
PROCEDURE

STEP 1 Park the motorcycle on a hard, level surface; turn off the ignition.

STEP 2 Remove the two stock phillips head screws securing the taillight lens to the base. See PIC.1A. Set the screws aside, they will be re-used.

STEP 3 Unplug the stock taillight bulb connector from the base. See PIC.1B. Push up on the tab on the underside of the connector and pull it out of the socket; set the stock taillight bulb connector aside, it will not be re-used.

-cont.-



CUSTOMER SERVICE

877.370.3604 (toll free)

INSTALLATION QUESTIONS

techsupport@kuryakyn.com
or call 715.247.2983

LIMITED WARRANTY

Kuryakyn warrants that any Kuryakyn products sold hereunder, shall be free of defects in materials and workmanship for a period of one (1) year from the date of purchase by the consumer excepting the following provisions:

- Kuryakyn shall have no obligation in the event the customer is unable to provide a receipt showing the date the customer purchased the product(s).
- The product must be properly installed, maintained and operated under normal conditions.
- Kuryakyn makes no warranty, expressed or implied, with respect to any gold plated products.
- Kuryakyn shall not be liable for any consequential and incidental damages, including labor and paint, resulting from failure of a Kuryakyn product, failure to deliver, delay in delivery, delivery in nonconforming condition, or for any breach of contract or duty between Kuryakyn and a customer.
- Kuryakyn products are often intended for use in specific applications. Kuryakyn makes no warranty if a Kuryakyn product is used in applications other than intended.
- Kuryakyn electrical products are warranted for one (1) year from the date of purchase by the consumer. Components of Kuryakyn products containing L.E.D.s will be warranted for defects in materials and workmanship for 3 years from the date of purchase.
- Kuryakyn makes no warranty of any kind in regard to other manufacturer's products distributed by Kuryakyn. Kuryakyn will pass on all warranties made by the manufacturer and where possible, will expedite the claim on behalf of the customer, but ultimately, responsibility for disposition of the warranty claim lies with the manufacturer.

ABOUT OUR CATALOG

You'll find all our innovations for H-D, GL and Metric Cruisers in our annual catalogs. Order online today—select the "CATALOGS" icon. Each Kuryakyn product comes with a Proof-of-Purchase good for a complimentary catalog. Details in packaging.

Be sure to ask your local dealer about other Kuryakyn products, the motorcycle parts and accessories designed for riders by riders.

©2005 Kuryakyn USA All Rights reserved.



STEP 4 Remove the adhesive backing from the included gasket; position the gasket as shown in [PIC.1C](#) and press into place.

STEP 5 Plug the included bulb socket connector into the socket in the base. See [PIC.1D](#).

STEP 6 Push in and twist the included bulb clockwise into the new bulb socket. The included bulb only fits in the socket one way.

STEP 7 Position the bulb socket in the back of the included reflector; push the socket into the reflector. See [PIC.2](#).

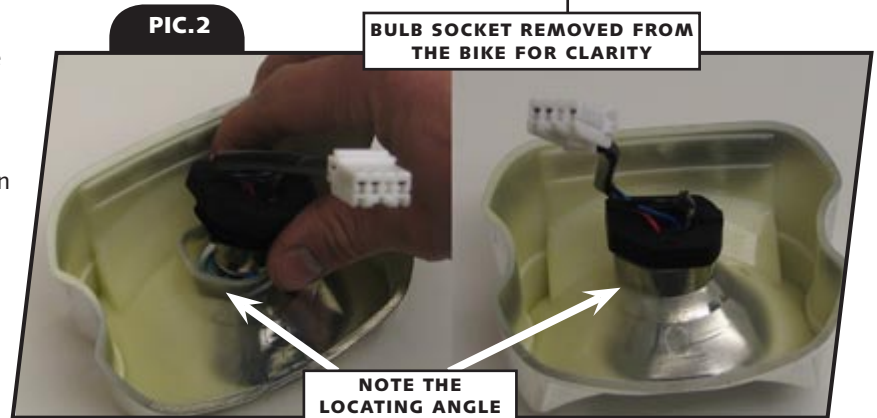
STEP 8 Tuck the socket wires into the recess in the taillight base.

STEP 9 Place the included taillight lens over the reflector and secure it with the two screws removed in STEP 2.

STEP 10 Ensure that the taillight and brake light operate properly before operating the motorcycle.

Ride On!

Kuryakyn



PAGE
2

LAYDOWN TAILLIGHT LENS INSTALLATION