



## LARGE GAUGE BEZELS 3781

### WITH COLORED ACCENTS

FITS: '00 & UP ELECTRA GLIDES AND ROAD GLIDES

### PARTS INCLUDED

- 2 Large bezels stamped chrome
- 2 Large bezel accents; black santoprene
- 2 Large bezel accents; red santoprene
- 2 Large bezel accents; blue santoprene
- 1 Installation Instructions

Please read and understand entire instructions before starting installation.

### THANK YOU FOR CHOOSING KÜRYAKYN!

**IN ORDER TO PROTECT YOU AND OTHERS FROM POSSIBLE INJURY AND/OR PROPERTY DAMAGE OR LOSS, PLEASE PAY CLOSE ATTENTION TO ALL INSTRUCTIONS, WARNINGS, CAUTIONS AND ATTENTION NOTES REGARDING THE USE AND CARE OF THIS PRODUCT.**

**WARNING!** THIS INDICATION ALERTS YOU TO THE FACT THAT IGNORING THE CONTENTS DESCRIBED HEREIN CAN RESULT IN POTENTIAL DEATH OR SERIOUS INJURY.

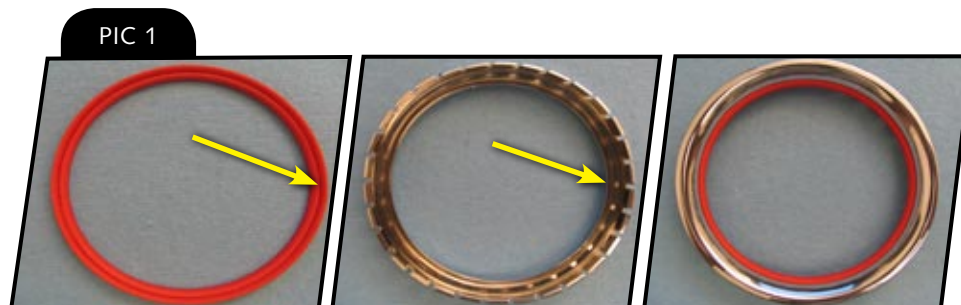
**CAUTION!** This indication alerts you to the fact that ignoring the contents described herein can result in potential injury or material damage.

**ATTENTION!** This indication alerts you to the fact that ignoring the contents described herein may negatively affect product performance and functionality.

### PROCEDURE

**STEP 1** Read and understand all steps in the instructions before starting the installation. Park the motorcycle on a hard, level surface and turn off the ignition.

**STEP 2** Install the bezel accent color of your choice into the chrome bezel. Place the double lipped side of the colored accent (PIC 1, letter "A") on the backside of the chrome bezel (PIC 1, letter "B"), making sure it is seated all the way around the bezel, as shown in PIC 1, letter "C".



"A"

"B"

"C"

**CUSTOMER SERVICE**  
877.370.3604 (toll free)

**INSTALLATION QUESTIONS**  
techsupport@kuryakyn.com  
or call 715.247.2983

### LIMITED WARRANTY

Küryakyn warrants that any Küryakyn products sold hereunder, shall be free of defects in materials and workmanship for a period of one (1) year from the date of purchase by the consumer excepting the following provisions:

- Küryakyn shall have no obligation in the event the customer is unable to provide a receipt showing the date the customer purchased the product(s).
  - The product must be properly installed, maintained and operated under normal conditions.
  - Küryakyn makes no warranty, expressed or implied, with respect to any gold plated products.
- Küryakyn shall not be liable for any consequential and incidental damages, including labor and paint, resulting from failure of a Küryakyn product, failure to deliver, delay in delivery, delivery in nonconforming condition, or for any breach of contract or duty between Küryakyn and a customer.
- Küryakyn products are often intended for use in specific applications. Küryakyn makes no warranty if a Küryakyn product is used in applications other than intended.
- Küryakyn electrical products are warranted for one (1) year from the date of purchase by the consumer. Components of Küryakyn products containing L.E.D.s will be warranted for defects in materials and workmanship for 3 years from the date of purchase.
- Küryakyn makes no warranty of any kind in regard to other manufacturer's products distributed by Küryakyn. Küryakyn will pass on all warranties made by the manufacturer and where possible, will expedite the claim on behalf of the customer, but ultimately, responsibility for disposition of the warranty claim lies with the manufacturer.

### ABOUT OUR CATALOG

You'll find all our innovations for H-D, GL and Metric Cruisers in our annual catalogs. Order online today—select the "CATALOGS" icon. Each Küryakyn® product comes with a Proof-of-Purchase good for a complimentary catalog. Details in packaging.

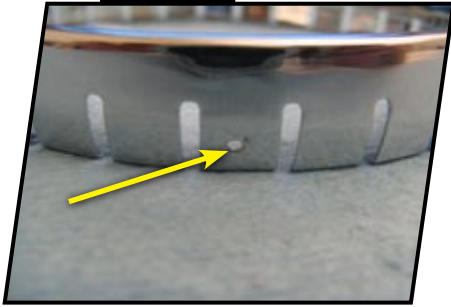
Be sure to ask your local dealer about other Küryakyn® products, the motorcycle parts and accessories designed for riders by riders.

©2005 Küryakyn USA® All Rights reserved.



**STEP 3** Locate the index mark on the chrome bezel. Position the mark so that it is placed on the bottom side of the gauge.

PIC 2



**STEP 4** Starting at the bottom of the gauge apply pressure to the bezel and work your way around to the top until the bezel is attached.(PIC 3)

PIC 3



*Ride On!*