



INSTALLATION

TECH-CONNECT DEVICE HOLDER

1693

PARTS INCLUDED

- 1 Tech-Connect Device Holder
- 1 Hardware Kit Containing:
 - 2 #8-32 X 5/8" Phillips Head Pan Screws
 - 2 #8 SAE Flat Washers
 - 4 6" Black Nylon Cable Ties
 - 1 Thin Foam Pad
- 1 Installation Instructions

Please read and understand entire instructions before starting installation.

THANK YOU FOR CHOOSING KÜRYAKYN!

IN ORDER TO PROTECT YOU AND OTHERS FROM POSSIBLE INJURY AND/OR PROPERTY DAMAGE OR LOSS, PLEASE PAY CLOSE ATTENTION TO ALL INSTRUCTIONS, WARNINGS, CAUTIONS AND NOTICES REGARDING THE USE AND CARE OF THIS PRODUCT.

WARNING

THIS INDICATION ALERTS YOU TO THE FACT THAT IGNORING THE CONTENTS DESCRIBED HEREIN CAN RESULT IN POTENTIAL DEATH OR SERIOUS INJURY.

NOTICE

This indication alerts you to the fact that ignoring the contents described herein may negatively affect product performance and functionality.

CAUTION

This indication alerts you to the fact that ignoring the contents described herein can result in potential injury.

NOTICE

IF INSTALLING THIS PRODUCT FOR ANOTHER PARTY, PLEASE MAKE SURE THEY RECEIVE THIS COPY OF THE INSTALLATION INSTRUCTIONS SO THEY ARE AWARE OF THE IMPORTANT INFORMATION CONTAINED IN THEM.

TOOLS SUGGESTED

Small Phillips Screwdriver

STRICTLY OBSERVE THE FOLLOWING GUIDELINES IN ORDER TO USE THE PRODUCT PROPERLY AND AVOID POTENTIALLY DANGEROUS ACCIDENTS.

STEP 1

Read and understand all steps in the instructions before starting the installation. Park the motorcycle on a hard, level surface and turn off the ignition.

NOTE: The Tech-Connect Mobile Device Holder requires the separate purchase and installation of an accessory mount.

NOTE: For devices measuring 1-5/8" to 3-5/8" wide.

CAUTION

Ensure that the installation of this product does not interfere with the proper operation of the motorcycle before riding.

CUSTOMER SERVICE

877.370.3604 (toll free)

INSTALLATION QUESTIONS

techsupport@kuryakyn.com
or call 715.247.2983

LIMITED WARRANTY

Küryakyn warrants that any Küryakyn products sold hereunder, shall be free of defects in materials and workmanship for a period of one (1) year from the date of purchase by the consumer excepting the following provisions:

- Küryakyn shall have no obligation in the event the customer is unable to provide a receipt showing the date the customer purchased the product(s).
- The product must be properly installed, maintained and operated under normal conditions.
- Küryakyn makes no warranty, expressed or implied, with respect to any gold plated products.
- Küryakyn shall not be liable for any consequential and incidental damages, including labor and paint, resulting from failure of a Küryakyn product, failure to deliver, delay in delivery, delivery in nonconforming condition, or for any breach of contract or duty between Küryakyn and a customer.
- Küryakyn products are often intended for use in specific applications. Küryakyn makes no warranty if a Küryakyn product is used in applications other than intended.
- Küryakyn electrical products are warranted for one (1) year from the date of purchase by the consumer. L.E.D.'S contained in components of Küryakyn products will be warranted for defects in materials and workmanship for 3 years from the date of purchase where as all other components shall be warranted for one(1) year. This includes, but is not limited to; control modules, wiring, chrome & other components.
- Küryakyn makes no warranty of any kind in regard to other manufacturer's products distributed by Küryakyn. Küryakyn will pass on all warranties made by the manufacturer and where possible, will expedite the claim on behalf of the customer, but ultimately, responsibility for disposition of the warranty claim lies with the manufacturer.

ABOUT OUR CATALOG

For purchasing Küryakyn® products, you can receive a complete catalog free of charge.

Send the Proof-of-Purchase below with your address to: Küryakyn, P.O. Box 339, Somerset, WI 54025.

Please indicate either Accessories Catalog for Harley-Davidson® or GL & Metric Cruisers.

Be sure to ask your local dealer about other Küryakyn® products, the motorcycle parts and accessories designed for riders by riders.

©2005 Küryakyn USA® All Rights reserved.



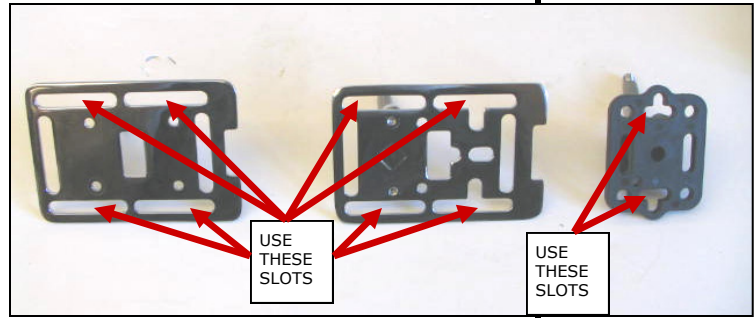
kuryakyn.com

NOTICE

It is the installer's responsibility to ensure that there is adequate clearance between the Tech-Connect and any painted surfaces. Küryakyn is not responsible for any damage due to inadequate clearance.

NOTICE

Be aware of any cables/wires that could potentially be pinched or crushed while using this product.



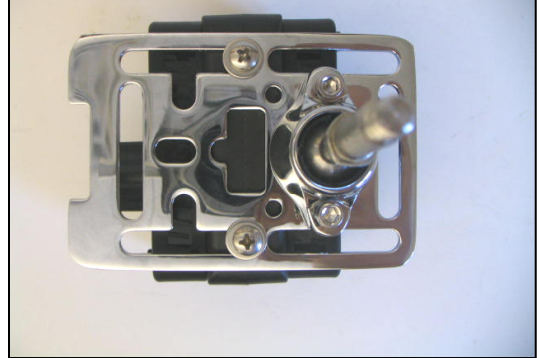
STEP 2

The Tech-Connect Device Holder can be mounted to Küryakyn Accessory mounts with ease. PIC 1 It may fit other accessory mounts with two mounting holes 1-15/16" apart for mounting with #8-32 screws. Works well with Ram Mounts.

STEP 3

Attach the Tech-Connect Device holder to the large chrome Accessory Mount Plate (Premium-XL Chrome Mount) by inserting one of the included #8 Phillips head screws and washers through a slot on each side of the Plate and threading them into the back of the Tech-Connect Device Holder. PIC 2 and PIC 3 Tighten securely.

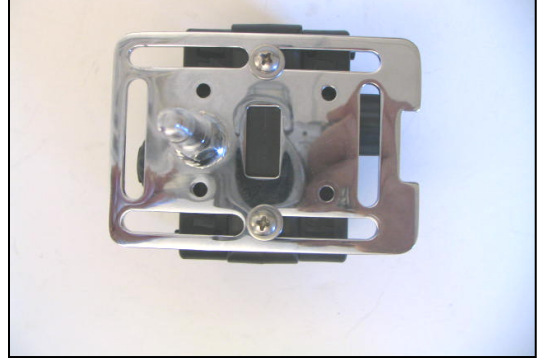
PIC 2



STEP 4

Attach the Tech-Connect Device Holder to the black plastic Accessory Mount Plate (Standard or Premium Chrome) by inserting one of the included #8 Phillips head screws and washers through the top and bottom slots on the Plate and threading them into the back of the Tech-Connect Device Holder. PIC 4 Tighten securely.

PIC 3



WARNING

TO PREVENT POSSIBLE LOSS OF CONTROL, WHICH COULD RESULT IN SERIOUS INJURY OR DEATH, WE DO NOT RECOMMEND REMOVING, REPLACING OR OPERATING THE DEVICE IN THE TECH-CONNECT WHILE RIDING THE MOTORCYCLE .

NOTICE

It is the installer's responsibility to ensure that all of the fasteners (including pre-assembled) are tightened before operation of the motorcycle. Küryakyn will not issue a warranty on components lost due to improper installation. Periodic maintenance may be required.

PIC 4



USING THE TECH-CONNECT HOLDER

STEP 1

Open the Tech-Connect Holder so the sides are separated from the center section. Peel the narrow pieces of foam off the backing paper, center them in the inset portion of the sides and apply them to the sides of the holder. Peel the wide piece of foam from the backing paper, center it in the inset portion in the center and apply it to the center of the holder. PIC 5 and PIC 6

STEP 2

To adjust the opening in the Tech-Connect larger, turn the knobs on the outside of the Tech-Connect (PIC 5) counter clockwise until your device will fit in between the arms. Turn the knobs clockwise to close the arms around the device. There is a locking detent under the knobs to hold them in place once they come in contact with the device. **DO NOT over tighten the knobs. Tightening them too tight will not allow you to loosen them with your fingers.** Periodically check the tightness of the mobile device in the Tech-Connect.

NOTE: For best results keep "L" shaped foot portion of the Tech-Connect Holder on the bottom of the device. Keep the device holding support arms centered on the mounting plate.



WARNING ENSURE THAT THERE IS CLEARANCE AT ALL POINTS WHEN THE HANDLEBARS ARE TURNED. INSUFFICIENT CLEARANCE MAY CAUSE DAMAGE TO THE MOTORCYCLE OR CAN CAUSE LOSS OF CONTROL THAT COULD RESULT IN SEVERE INJURY OR DEATH.



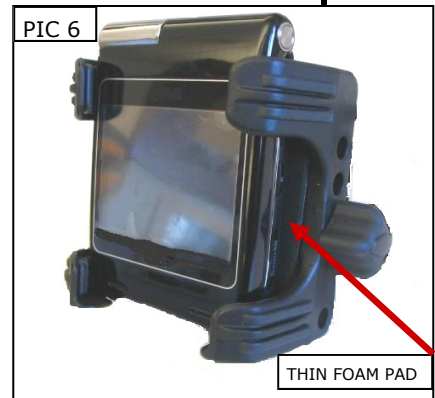
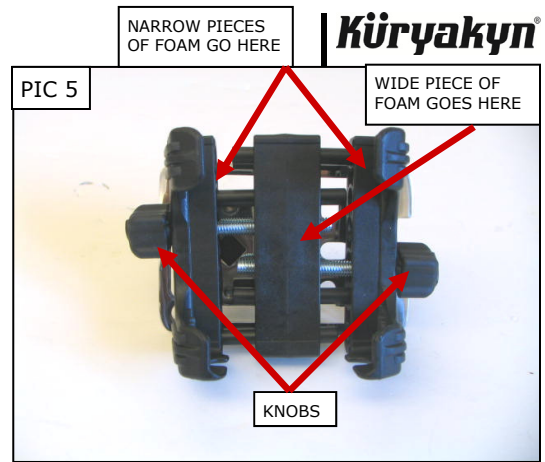
WARNING DO NOT ATTEMPT TO OPERATE OR REMOVE THE MOBILE DEVICE FROM THE HOLDER WHILE OPERATING THE MOTORCYCLE.

NOTICE

Ensure that the Mobile Device is secure in the Tech-Connect Holder. Küryakyn is not responsible for any Device that is stolen or damaged from use in this Holder or from the Holder not being properly secured to the motorcycle. It is the installer's responsibility to ensure that all of the fasteners (including preassembled) are tightened before operation of the motorcycle. Küryakyn will not issue a warranty on components lost due to improper installation. Periodic maintenance may be required.

NOTICE

Motorcycling can be done in a harsh environment. Make sure your Mobile Device is appropriate for this application.



PAGE

3

Ride On!

TECH-CONNECT DEVICE HOLDER

INSTALLATION