



## STANDARD ACCESSORY MOUNT w/FAIRING MOUNT 1673

### PARTS INCLUDED

- 1 Standard Accessory Mount with Fairing Mount—Black
- 1 Left Fairing Mount—Black
- 1 Hardware Kit Containing:
  - 1 1/4" Flat Washer
  - 1 1/4"-20 Nylock Nut
  - 4 #8-32 X 3/4" Phillips Head Pan Screws
  - 4 #8-32 Nylock Nuts
  - 8 #8 SAE Flat Washers
  - 4 6" Black Nylon Cable Ties
  - 1 Package Anti Seize
- 1 Installation Instructions

Please read and understand entire instructions before starting installation.

### THANK YOU FOR CHOOSING KÜRYAKYN!

**IN ORDER TO PROTECT YOU AND OTHERS FROM POSSIBLE INJURY AND/OR PROPERTY DAMAGE OR LOSS, PLEASE PAY CLOSE ATTENTION TO ALL INSTRUCTIONS, WARNINGS, CAUTIONS AND NOTICES REGARDING THE USE AND CARE OF THIS PRODUCT.**

<b>WARNING</b>	<b>THIS INDICATION ALERTS YOU TO THE FACT THAT IGNORING THE CONTENTS DESCRIBED HEREIN CAN RESULT IN POTENTIAL DEATH OR SERIOUS INJURY.</b>
<b>NOTICE</b>	<b>This indication alerts you to the fact that ignoring the contents described herein may negatively affect product performance and functionality or damage the product itself or the product it is being attached to.</b>
<b>CAUTION</b>	<b>This indication alerts you to the fact that ignoring the contents described herein can result in minor or moderate potential injury.</b>

### TOOLS SUGGESTED

Set Of Torx Wrenches, Set of Combination Wrenches, Phillips Screwdriver

**STRICTLY OBSERVE THE FOLLOWING GUIDELINES IN ORDER TO USE THE PRODUCT PROPERLY AND AVOID POTENTIALLY DANGEROUS ACCIDENTS.**

**NOTICE**

**IF INSTALLING THIS PRODUCT FOR ANOTHER PARTY, PLEASE MAKE SURE THEY RECEIVE THIS COPY OF THE INSTALLATION INSTRUCTIONS SO THEY ARE AWARE OF THE IMPORTANT INFORMATION CONTAINED IN THEM.**

**STEP 1** Read and understand all steps in the instructions before starting the installation. Park the motorcycle on a hard, level surface and turn off the ignition.

**NOTICE**

**Avoid damage to the motorcycle. Protect painted surfaces with a soft cloth or blanket.**

**STEP 2** Place a clean, soft blanket over the gas tank to protect the paint.

### CUSTOMER SERVICE

877.370.3604 (toll free)

### INSTALLATION QUESTIONS

techsupport@kuryakyn.com  
or call 715.247.2983

### LIMITED WARRANTY

Kuryakyn warrants that any Kuryakyn products sold hereunder, shall be free of defects in materials and workmanship for a period of one (1) year from the date of purchase by the consumer excepting the following provisions:

- Kuryakyn shall have no obligation in the event the customer is unable to provide a receipt showing the date the customer purchased the product(s).
  - The product must be properly installed, maintained and operated under normal conditions.
  - Kuryakyn makes no warranty, expressed or implied, with respect to any gold plated products.
  - Kuryakyn shall not be liable for any consequential and incidental damages, including labor and paint, resulting from failure of a Kuryakyn product, failure to deliver, delay in delivery, delivery in nonconforming condition, or for any breach of contract or duty between Kuryakyn and a customer.
- Kuryakyn products are often intended for use in specific applications. Kuryakyn makes no warranty if a Kuryakyn product is used in applications other than intended.
- Kuryakyn electrical products are warranted for one (1) year from the date of purchase by the consumer. L.E.D.'S contained in components of Kuryakyn products will be warranted for defects in materials and workmanship for 3 years from the date of purchase where as all other components shall be warranted for one(1) year. This includes, but is not limited to; control modules, wiring, chrome & other components.
- Kuryakyn makes no warranty of any kind in regard to other manufacturer's products distributed by Kuryakyn. Kuryakyn will pass on all warranties made by the manufacturer and where possible, will expedite the claim on behalf of the customer, but ultimately, responsibility for disposition of the warranty claim lies with the manufacturer.

### ABOUT OUR CATALOG

For purchasing Kuryakyn® products, you can receive a complete catalog free of charge. Send the Proof-of-Purchase below with your address to: Kuryakyn, P.O. Box 339, Somerset, WI 54025. Please indicate either Accessories Catalog for Harley-Davidson® or GL & Metric Cruisers.

Be sure to ask your local dealer about other Kuryakyn® products, the motorcycle parts and accessories designed for riders by riders.

©2005 Kuryakyn USA® All Rights reserved.





Ensure that the installation of this product does not interfere with the proper operation of the motorcycle before riding.



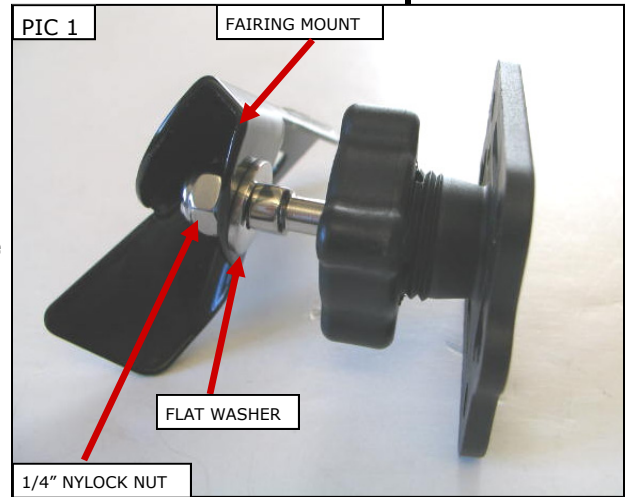
It is the installer's responsibility to ensure that there is adequate clearance between the Standard Accessory Mount and any painted surfaces. Küryakyn is not responsible for any damage due to inadequate clearance.



Be aware of any cables/wires that could potentially be pinched or crushed while using this product.

**STEP 3**

Install the Standard Accessory Mount to the Fairing Mount by inserting the metal shaft through the 1/4" flat washer, then through the hole in the Fairing Mount. Secure the Standard Accessory Mount with the included 1/4"-20 nylock nut. PIC 1 Tighten securely

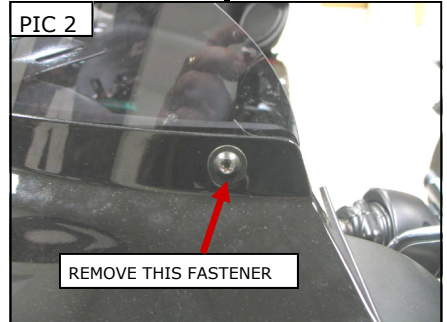


**STEP 4**

Remove the outside left windscreen fastener as shown in PIC 2.

**STEP 5**

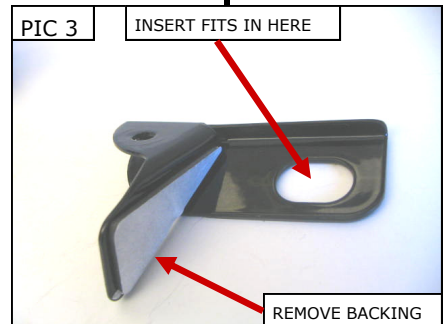
Remove the adhesive backing from the side of the Fairing Mount. PIC 3 Gently spread the windscreen away from the inner fairing and slide the Fairing mount in between the inner fairing and the windscreen. The threaded insert in the inner fairing will fit inside the large slot on the Fairing Mount.



Use the supplied anti-seize for fasteners; this will prevent galling and make future removal of fasteners easier.

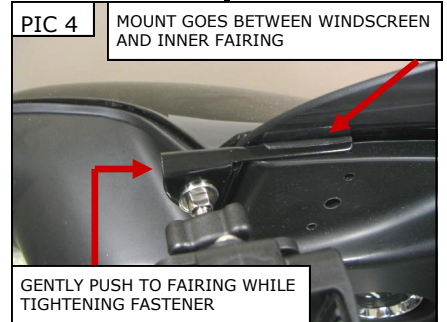
**STEP 6**

Gently push the Fairing Mount against the inner fairing, insert the fastener removed in Step 4 through the outer fairing, windscreen, mount and thread into the inner fairing. PIC 4 Tighten securely.



**STEP 7**

Turn the handlebars in both directions to their full stop position and ensure that there is clearance between the mounting plate/accessory and the gas tank, dash and other accessories.



ENSURE THAT THERE IS CLEARANCE AT ALL POINTS WHEN THE HANDLEBARS ARE TURNED, INSUFFICIENT CLEARANCE MAY CAUSE DAMAGE TO THE MOTORCYCLE OR CAN CAUSE LOSS OF CONTROL THAT COULD RESULT IN SERIOUS INJURY OR DEATH.



TO PREVENT POSSIBLE LOSS OF CONTROL, WHICH COULD RESULT IN SERIOUS INJURY OR DEATH, WE DO NOT RECOMMEND REMOVING, REPLACING OR OPERATING THE DEVICE ON THE STANDARD ACCESSORY MOUNT WHILE RIDING THE MOTORCYCLE .



It is the installer's responsibility to ensure that all of the fasteners (including pre-assembled) are tightened before operation of the motorcycle. Küryakyn will not provide warranty coverage on products or components lost due to improper installation or lack of maintenance. Periodic inspection and maintenance are required on all fasteners.

-cont.-

**USING THE STANDARD ACCESSORY MOUNT**

**STEP 1** The Standard Accessory mount has a variety of slots and holes to allow you to mount many different mobile device holders. PIC 6 Use the included #8 screws, washers and lock nuts to secure the device holder (sold separately) to the Accessory Mount.

- A**—Standard AMPS pattern
- B**—Küryakyn Tech-Connect pattern and Ram Mount pattern
- C**—Küryakyn Accessory Pouches pattern

**STEP 2** To remove the Accessory Mount from the bike for storage, loosen the tensioning nut on the back side of the holder until it clears the threads. PIC 7 Snap the Accessory Mount off of the ball. PIC 8 Remove the tension nut and thread it to the Accessory Mount for storage.

**STEP 3** To replace the Accessory Mount on the swivel ball, remove the tension nut from the back. Slide the tension nut over the swivel ball, snap the Accessory Mount back on the swivel ball and thread the tension nut onto the Accessory Mount. Tighten the tension nut to the desired tension.

**STEP 4** To adjust the angle of the Accessory Mount, loosen the tensioning nut, adjust the Accessory Mount to the desired position and tighten the tension nut. PIC 5 The tension nut will allow you to keep the Accessory Mount in the same position or, with a little less tightness, allow you to move the Accessory Mount on the swivel ball.

**WARNING** DO NOT ATTEMPT TO OPERATE OR REMOVE THE MOBILE DEVICE WHILE OPERATING THE MOTORCYCLE.

**NOTICE** Ensure that the Mobile Device on the Standard Accessory Mount is secure. Küryakyn is not responsible for any Device that is stolen or damaged from use on this Mount or from the Mount not being properly secured to the motorcycle. It is the installer’s responsibility to ensure that all of the fasteners (including pre-assembled) are tightened before operation of the motorcycle. Küryakyn will not provide warranty coverage on products or components lost due to improper installation or lack of maintenance. Periodic inspection and maintenance are required on all fasteners.

**NOTICE** Motorcycling can be done in a harsh environment. Make sure your Mobile Device is appropriate for this application.

