

Installation instructions:



AKRAPOVIC RACING EXHAUST SYSTEM for the HONDA CB1300

Congratulations on purchasing an Akrapovic exhaust system. Please read these installation instructions carefully. If you have any trouble installing the system please contact your authorized dealer!

IMPORTANT INFORMATION

Exclusion of Certain Liability

9. The manufacturer, importer or dealer shall not be liable for any incidental damage including personal injury or any other damages caused by improper installation or operation of the Akrapovic exhaust system. When installing the Akrapovic exhaust system be careful that the exhaust system does not touch other parts sensitive to high temperature.
9. Akrapovic makes no representation or warranties with regard to damage caused by the improper installation, use and maintenance of the Akrapovic exhaust system. The warranty is limited to defects recognized by our technical department and to normal use, and excludes items subject to normal wear (gaskets and damping wool). The guarantee is void in case of accident, modification, improper or competition use.
9. Do not attempt to install the Akrapovic exhaust system on a motorcycle for which it was not made or tested by Akrapovic.
9. When the exhaust system gets very hot during operation, be careful not to burn yourself on the exhaust system or parts which are in direct contact with it, even when the motor is not running. Also protect other people, especially children, from the injuries mentioned above.
9. In some cases Akrapovic exhaust system kits contain chemical products (ceramic anti-seizing grease; bolt sealant). Handle with care, do not inhale or swallow. Avoid excessive contact with skin, eyes or mucous membranes. Keep out of reach of children.
9. Technical specifications of Akrapovic exhaust systems and related products subject to change without notice.

Trademarks

The Akrapovic Exhaust System Technology logo is a registered trademark of Akrapovic d.d.

Akrapovic website

Information about Akrapovic exhaust systems and related products is available on the Akrapovic website at:

<http://www.akrapovic.com/>

Copyright

No part of the Akrapovic exhaust system or its documentation may be reproduced or distributed in any form or by any means without the prior written authorization of the Akrapovic company.

© Akrapovic, d.d. All rights reserved.

Symbols

The following symbols are used throughout these installation instructions:



USE BOLT SEALANT; Apply 3 to 4 small drops of bolt sealant onto the cleaned and degreased threads before tightening bolts. **WARNING! Avoid contact with skin, eyes and mucous membranes. Do not inhale fumes. Keep out of the reach of children.**



USE ANTI-SEIZING GREASE (white tube); Prevents seizing, corrosion and excessive wear between the titanium components of your exhaust system. **WARNING! Avoid eye contact. Avoid excessive skin contact. Keep out of the reach of children.**



USE ANTI-SEIZE LEAD-FREE COPPER PASTE (black tube); Provides trouble-free and long-lasting protection against seizing, corrosion and rusting of bolts, threaded ends, nuts, joints, etc. Also protects against vibration, wear and impact. **WARNING! Avoid eye contact. Avoid excessive skin contact. Keep out of the reach of children.**


INSTALLATION INSTRUCTIONS

 BEFORE INSTALLING CHECK SCHEMATIC OF THE EXHAUST SYSTEM!

! IF ANY ITEMS IN THE AKRAPOVIC EXHAUST SYSTEM PACKAGE ARE MISSING PLEASE CONTACT YOUR AUTHORIZED DEALER. KEEP THE SCHEMATIC FOR FUTURE REFERENCE.

! THESE INSTALLATION INSTRUCTIONS MUST BE READ CAREFULLY IN ORDER TO ENSURE PROPER INSTALLATION AND OPERATION OF THE AKRAPOVIC EXHAUST SYSTEM.

! THE EXHAUST SYSTEM CAN BE EXTREMELY HOT. ALLOW THE MOTORCYCLE TO COOL DOWN BEFORE BEGINNING INSTALLATION.

 WE ADVISE YOU TO LEAVE INSTALLATION TO A QUALIFIED SERVICEMAN. IMPROPER INSTALLATION MAY RESULT IN A SHORTER LIFETIME OF THE EXHAUST SYSTEM AND/OR DAMAGE TO THE MOTORCYCLE.



T-handle 10mm swiveling wrench
T-handle 12mm swiveling wrench
T-handle 6mm three hexagon key wrench
Combination 12mm wrench
Combination 17mm wrench
Spring puller

REMOVAL OF STOCK EXHAUST SYSTEM:

1. Put the motorcycle on a side stand, we recommend a racing stand. Make sure, that surface is solid and flat.
2. Unscrew the bolts from the metal clamp at the link pipe - collector joint and remove the bolt from muffler chassis hanging bracket (**Figure 1, 2**). Remove the muffler together with the link pipe (**Figure 3**).



Figure 1



Figure 2



Figure 3

3. Unscrew and remove the bolts from the water cooler bracket and slightly remove the cooler. **WARNING! do not disconnect the cooling system tubes!** Make sure not to damage the cooling fins (**Figure 4**). Unscrew the nuts from the header tube flanges; make sure not to damage the cooling fins (**Figure 5**).

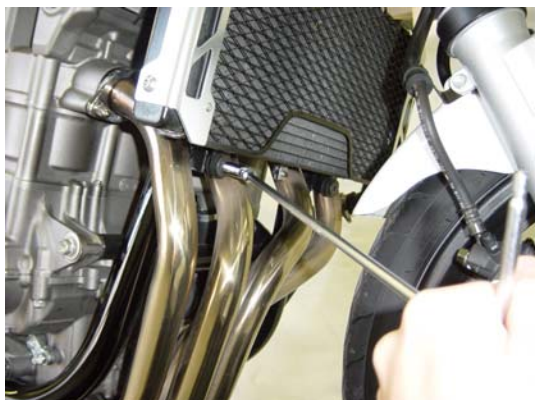


Figure 4



Figure 5

4. Unscrew the bolt from chassis hanging bracket of stock headers (**Figure 6**). Unscrew both lambda sensors (for model with lambda sensors) and remove the stock header tubes (**Figure 7, 8, 9**). **WARNING! make sure, that you do not damage the lambda sensor's electrical lead.**



Figure 6



Figure 7



Figure 8



Figure 9

INSTALLATION OF THE AKRAPOVIC RACING EXHAUST SYSTEM:

1. **WARNING! the outer flanges are not symmetrical, make sure you install them correctly (Figure 10).** Set up the sleeves together with the flanges and springs; make sure they are correctly oriented and that the holes for attaching the springs line up with the loops on the header tubes; do not fully tighten up the flanges. **WARNING! make sure not to damage the cooling fins (Figure 11, 12, 13).**



Figure 10



Figure 11



Figure 12



Figure 13

2. Insert the header tubes properly, attach the springs and tighten the flanges (Tightening torque 9,8Nm / 7Ftlb). Make sure not to damage the cooling fins. **WARNING! make sure, that springs pull the headers all the way onto the sleeves – use rubber mallet if necessary to tap the connections into place! (Figure 14, 15, 16, 17).** Make sure the header tubes are not touching the engine, oil cooler or other parts of the motorcycle.



Figure 14



Figure 15



Figure 16



Figure 17

3. Tighten the lambda sensors into the both collectors ; make sure the wires are correctly positioned. **WARNING! grease only the threads of the lambda sensors with Akrapovic anti-seize lead-free copper paste (black tube)! (Figure 18, 19, 20, 21). WARNING! make sure, that you do not damage the lambda sensor's electrical lead.**



Figure 18



Figure 19



Figure 20

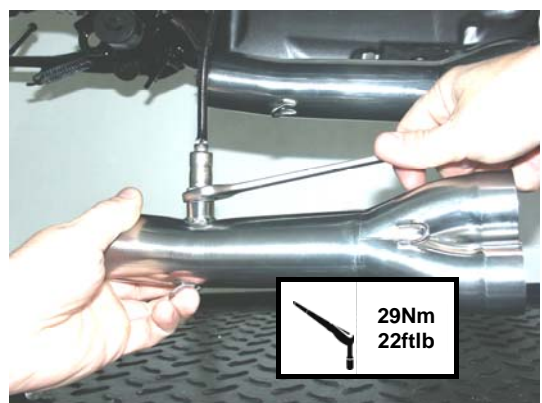


Figure 21

4. Slide the collectors onto the header tubes and attach the springs (Figure 22, 23). **WARNING!** make sure, that springs pull the collectors all the way onto the headers – use rubber mallet if necessary to tap the connections into place! Make sure the collectors are not touching the frame or any other parts of the motorcycle.



Figure 22



Figure 23

5. For optional central stand stopper only: attach the Akrapovic central stand stopper (Figure 24, 25, 26).



Figure 24



Figure 25

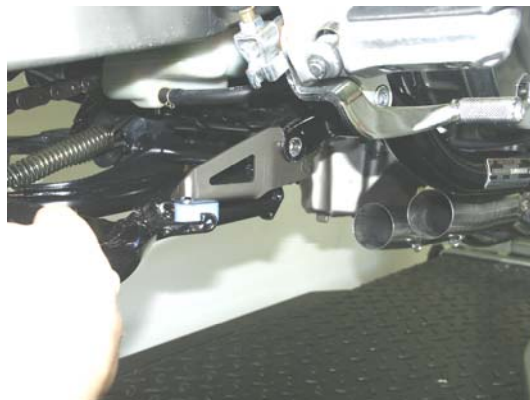


Figure 26

6. Correctly install the rubber damper onto the link pipe chassis hanging bracket (Figure 27, 28)



Figure 27



Figure 28

7. Slide the link pipe onto the collectors, attach the springs and install and tighten the bolt for the link pipe chassis hanging bracket (Figure 29, 30, 31, 32). **WARNING!** make sure, that springs pull the link pipe all the way onto the collectors – use rubber mallet if necessary to tap the connections into place! Make sure the link pipe is not touching the frame and other parts of the motorcycle.

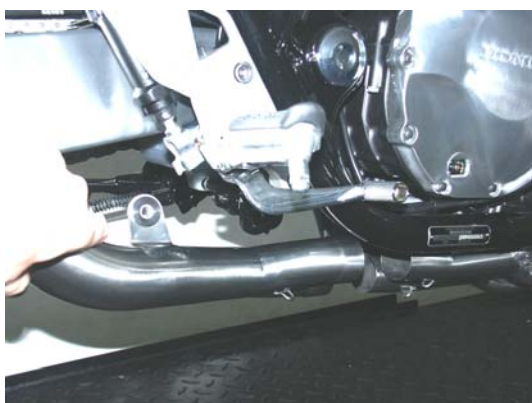


Figure 29



Figure 30



Figure 31

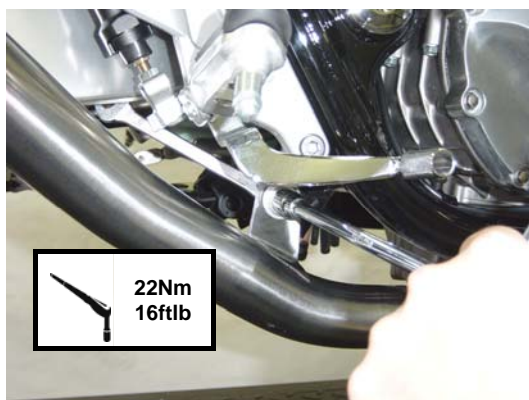


Figure 32

8. Position the muffler correctly and slide it onto the outlet side of the link pipe and attach the springs. **WARNING! make sure, that springs pull the muffler all the way onto the link pipe – use rubber mallet if necessary to tap the connections into place! (Figure 33, 34).**



Figure 33



Figure 34

9. Correctly position the carbon-fiber clamp and slide it onto the muffler - bear in mind **the left offset** of the carbon-fiber clamp viewed from the rear. **WARNING! open the clamp slightly wider than the diameter of the outer sleeve of the muffler – do not scrape it along the muffler outer sleeve! (Figure 35).** Align the muffler in respect to the motorcycle and tighten the carbon-fiber clamp onto the stock chassis hanging bracket using stock bolt, washer and nut (Figure 36, 37, 38). Make sure the muffler is not touching other parts of the motorcycle.



Figure 35



Figure 36

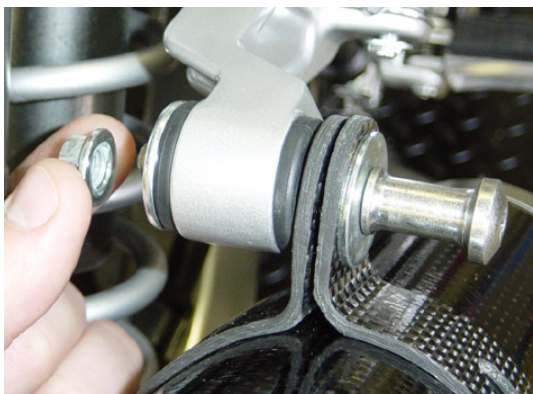


Figure 37



Figure 38

Final installation:

1. Clean grease spots:
 - a. Muffler – carbon-fiber outer sleeve: use a soft dry cloth.
 - b. Muffler – titanium outer sleeve: use a soft cloth sprayed with a multi-purpose spray lubricant (WD-40 or equivalent).
 - c. Stainless steel link pipe, collectors and header tubes: use a soft cloth sprayed with a contact cleaner, then wipe with a soft dry cloth.

Cleaning will prevent spots from burning onto the surface. Do not use aggressive chemical cleaners, because they can damage the sticker.

Position of the correctly installed Akrapovic **RACING** system (Figure 39).



Figure 39

2. Check the operation of the brakes and suspension. Make sure all the bolts are sufficiently tightened. In case the exhaust system touches the cowlings or other parts repeat the adjustment of the exhaust system or contact your authorized dealer.

! IT IS NORMAL IF WHITE SMOKE COMES OUT OF THE MUFFLER ON FIRST OPERATION.

! DO NOT STAND BEHIND THE MUFFLER ON FIRST OPERATION.

! DO NOT USE AUTOMOTIVE WHEEL CLEANERS OR ANY CLEANING PRODUCTS WHICH CONTAIN ACIDIC ADDITIVES TO CLEAN AKRAPOVIC EXHAUST SYSTEMS.

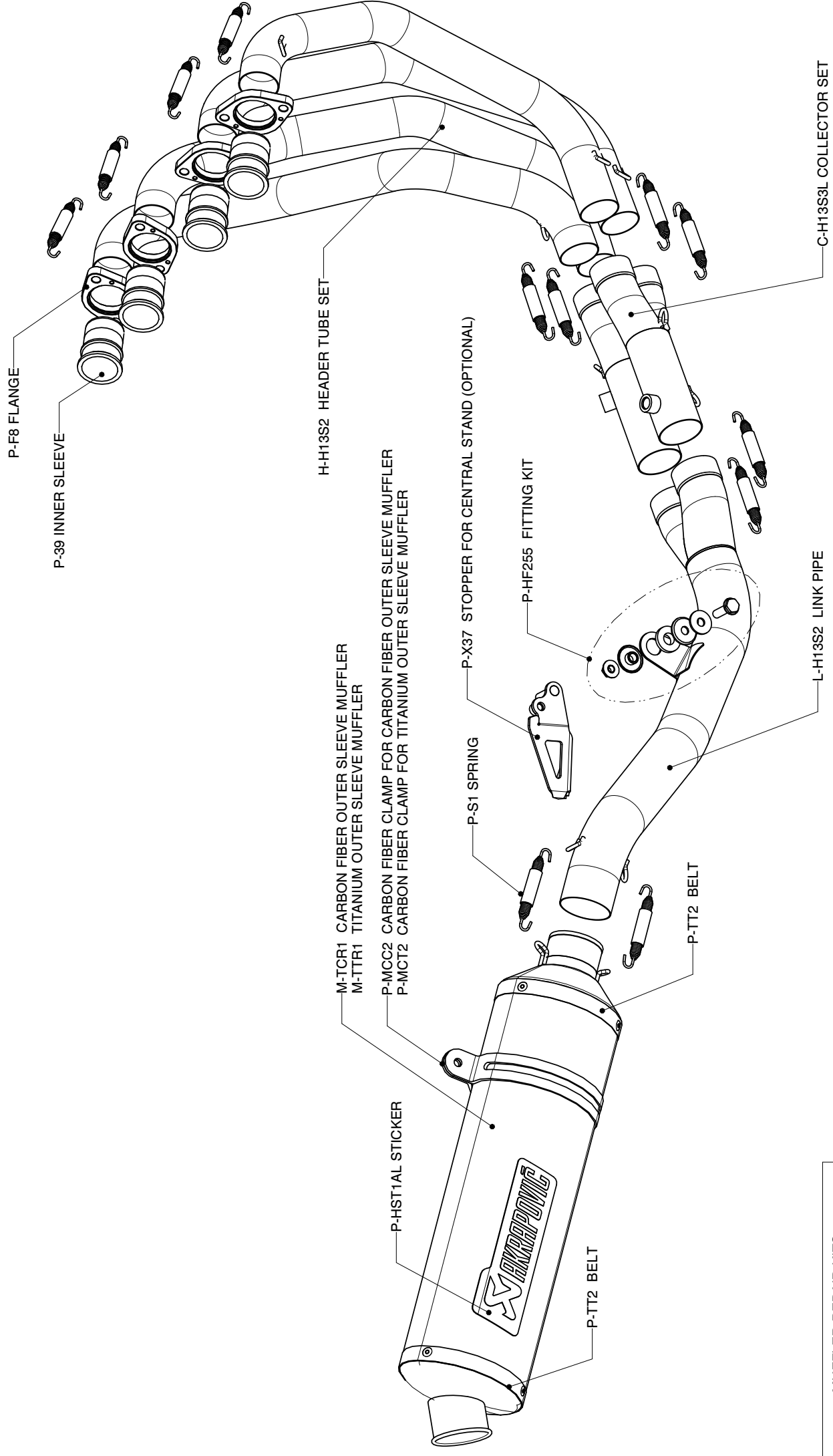
MAINTENANCE OF THE AKRAPOVIC EXHAUST SYSTEM

1. Clean the titanium exhaust components with a multi-purpose spray lubricant (WD-40 or equivalent), carbon fiber exhaust components with soft and dry cloth and stainless steel components with soft cloth sprayed with contact cleaner, then wipe with soft and dry cloth. Do not use aggressive chemical cleaners, because they can damage the sticker. A change in the color of the exhaust system is normal due to the high temperatures.
2. The wearing out of the muffler silencing material depends on the type of the engine and riding style. Contact your dealer/serviceman if visible changes appear on muffler's outer sleeve or the noise level is increased.
3. Periodically make sure all the bolts and springs are sufficiently tight.

HONDA CB1300, Complete exhaust system / RACING LINE

Product code: S-H13S3-LC

S-H13S3-LT



MUFFLER REPAIR KITS	
REPACK	P-RPCK12
SLEEVE	P-RKS45T47 - TITANIUM
	P-RKS45C47 - CARBON

WARNING:

Please note that certain aftermarket exhaust systems may not comply with applicable California laws and regulations, and may therefore be prohibited for use on California highways or roads, or on roads or vehicles otherwise subject to emissions control requirements.

Akrapovič exhaust systems for automobiles and motorcycles mounted downstream of the catalytic converter (also known as “cat-back systems”) are considered “replacement parts” in California by the California Air Resources Board (CARB), and do not require an exemption or executive order from CARB to be sold in California. However, California prohibits the use of any aftermarket exhaust system that modifies, removes or replaces original equipment catalysts, unless CARB has issued an Executive Order as to such part or system.

Further, Akrapovič parts or exhaust systems used or intended for use on “racing vehicles” (i.e. a competition vehicle used exclusively for competition on closed-course circuits) do not require an exemption or Executive Order from CARB to be sold in California. However, such parts are prohibited from use on California public highways or roads, even if occasionally used “off-road.”